



Smart G4 - Easy GRMS
Hotel Packages 2022
Best - Easy - Luxury - affordable GRMS



G4 GRMS Packages 2022:

Package A

Lighting - Energy - Easy Control - Moods

Package B

Lighting - Super Energy - Easy Control - Moods
Door Bell - Door Service - Room Number

Package C

Lighting - Super Energy - Easy Control - Moods
Door Bell - Door Service - Room Number
Access Control - Check in Encoding

Package D

Pure Energy Saving for Any Hotel/Motel



Q&A about Packages:

Q. Can we add features to the Packages?

A. Yes can add as needed any thing like curtain Motor controls, More sensors, more Channels , Media , Power , USB, Data outlets ++

Q. Can We integrate to Third Party Devices or software?

A. Yes can integrate to KNX, DALI, DMX, and Many Other using RSIP and other bridges
Also, can Integrate to third party using our ODBC and Open protocols*

Q. Waht do you mean by Super energy saving?

A. We mean that our system is foul proof and decrease wastage by 80% guaranteed

Q. When you Say Package, that means every thing we see in the list?

A. Yes absolutely the package includes everything in the list per room
But note that the Backbone is included for 50 Rooms as average.

Q. What is the Price range if we say that we will order 50 Rooms?

A. We are the most Professional and Stable with best support system today in the market.
We offer prices and features that can not be matched together by any other provider
Here are some examples of our price pointers:
- Package D is only 68 USD Per Room (X-Works)
- Package A is Only 92 USD per Room (X-Works)
- Package B is \$177-188 USD if with option per Room (X-Works)
- Package C is \$187-225 USD if with option per Room (X-Works)

Q. What DO you mean by (x-Works)?


A. Meaning from our Owned factory Grounds in Dongguan China your Forwarder must Collect Packs
then your forwarder will handle to ship to you on your own cost. you will also handle local customs + taxes
as applicable at your country.

Q. What about Installation, Programing, Support and Warrantee?

A. Cabling design will be provided by us to your electrical contractor or your team to pull and prepare cables
your team can be taught how to install using videos that we have ready for installers, and by Online guidance
Programing has to be done by a Certified professional, If you are not, then that can be arranged and you can agree together
We have online support always, and we give 24 Months Warrantee on all our products.

Q. What if we like to select different system and different shapes not related to these packages?

A. We have big range of GRMS options and Series. Those will be much higher cost than these special packages.



**Main Features
Included In Every Room Package:**

- * Lighting Control
- * Temperature Monitoring
- * AC IR Control
- * Moods
- * Super Elegant Universal Touch Panels
- * TV IR Control
- * Motion and Occupancy
- * Night Light activation
- * Online/Offline Operation
- * Ability to control by App
- * Service Request (on SW only)
- * Expandable system (Ungradable)

*** Including All Backbone Needs & Accessories

EASY GRMS PACKAGE A

Back Bone

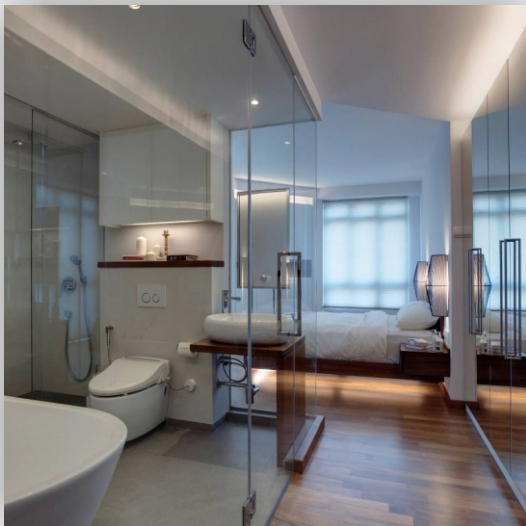
RSIP3 Good for 50 Rooms to communicate 2-way with main server system (PC SQL Server by Client)



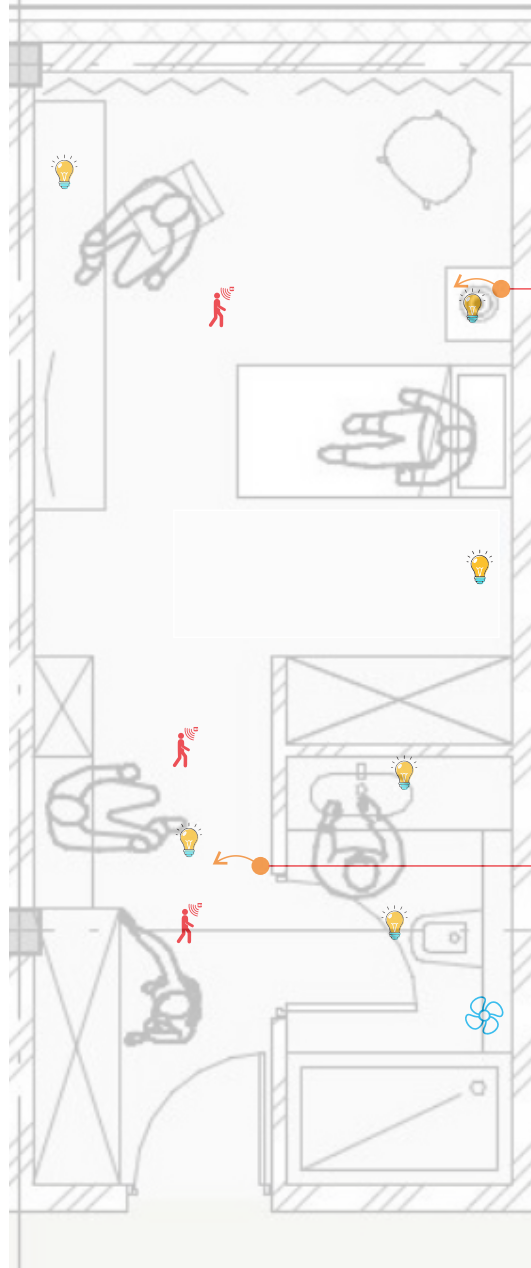
Cable Manager++ To Organise S-BUS wires coming from Rooms in Backbone structure of Hotel



1 Power Supply for Every 20 Rooms



G4 GRMS Package A



Online/ Offline System




- Easy Touch Panel
- Lights
- Motion
- Temperature
- Service: MUR, DND, Other
- Moods +
- LED Night Light Surround
- IR for TV Or Split AC Control

Can Add Curtain Control and Motor as Option*

- Easy Touch Panel
- Temperature
- Lights
- Motion
- Service: MUR, DND, Other
- Moods +
- LED Night Light Surround (Night Light can activate on Motion)

Service Module at H.Keeping
Check in/Out Mood Control



**Main Features
Included In Every Room Package:**

- * Lighting Control
- * Temperature Monitoring
- * AC IR Control & FCU VRF/VRV
- * Moods
- * Super Elegant Universal Touch Panels
- * TV IR Control
- * Motion and Occupancy
- * Night Light activation
- * Online/Offline Operation
- * Ability to control by App
- * Service Request and Door Display
- * LED Backlit Room Number
- * Door Bell Button
- * Alarm If Door forgotten Open
- * Super Energy Saving Included
- * Expandable system (Ungradable)

*** Including All Backbone Needs & Accessories

- * Optional Chime Ding-Dong

EASY GRMS PACKAGE B

Back Bone

Cool Master Bridge to connect to client's cool master for VRF VRV Air con System (good for 32-64 FCU)



RSIP3 Good for 50 Rooms to communicate 2-way with main server system (PC SQL Server by Client)



Cable Manager++ To Organise S-BUS wires coming from Rooms in Backbone structure of Hotel



1 Power Supply for Backbone

*Chime option (Ding Dong) Can be locally purchased



Energy Saving Master Panel Cuts Room Power if no occupancy based on sensors after door is closed last. Built in 32A Heavy relay 5A relay for other use 24VDC S-Bus Power 12VDC Power supply for lock, PIR, and Chime. Built in Energy Logic

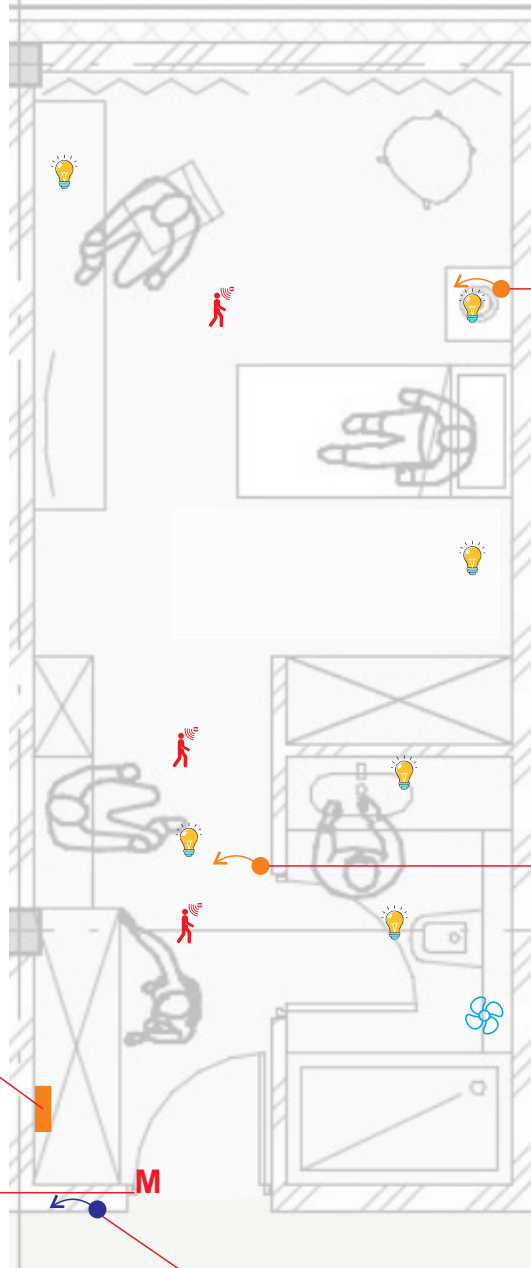


Magnetic Door window Contact For occupancy check trigger and energy saving + Alert if door forgotten open



Service Module at H.Keeping Check in/Out Mood Control Energy and Security Module

G4 GRMS Package B



Online/ Offline System



Easy Touch Panel
Temperature
Lights
Motion
Service:
MUR, DND, Other
Moods +
LED Night Light Surround
IR for TV Or Split AC Control

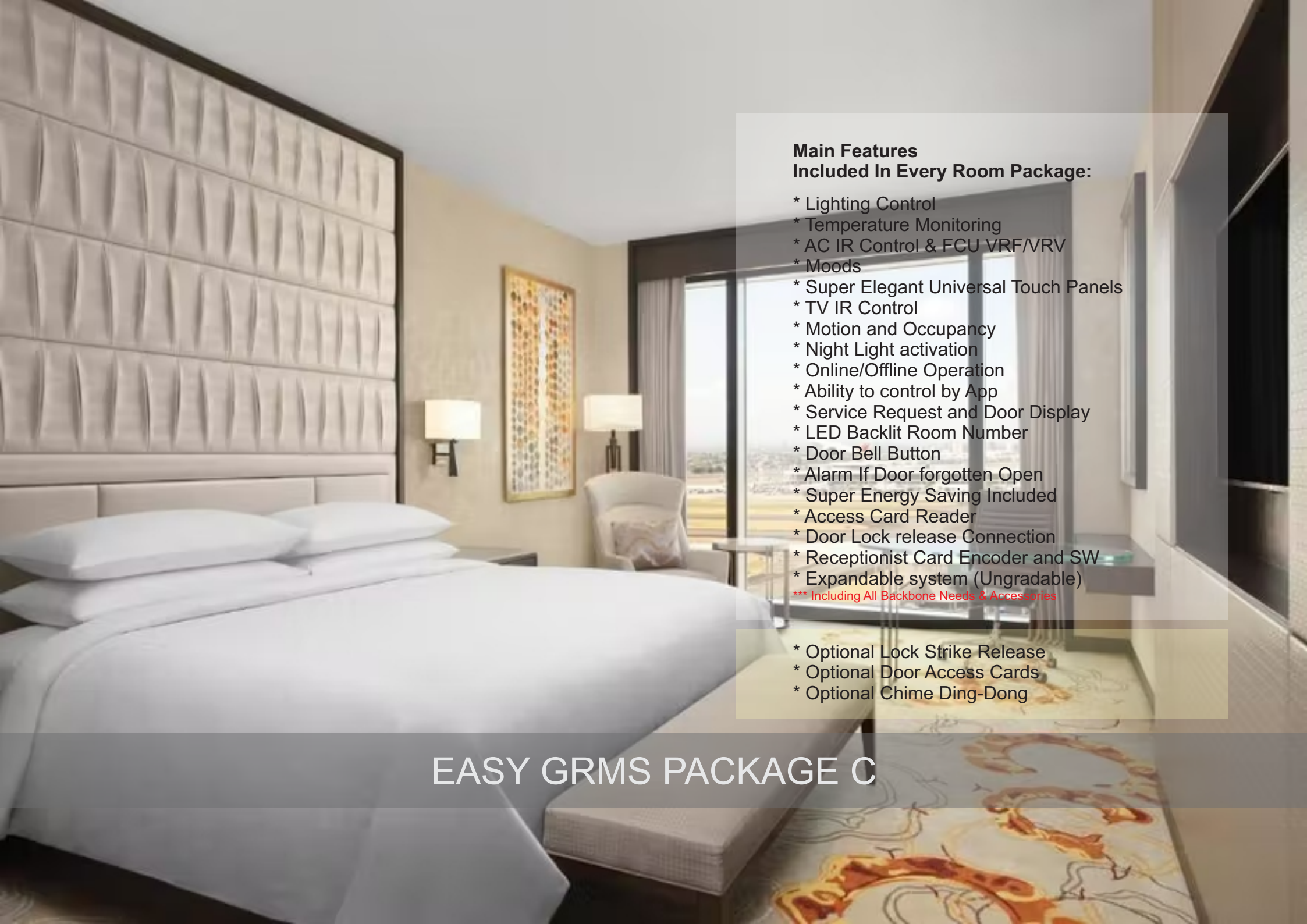
Can Add Curtain Control and Motor as Option*

Easy Touch Panel
Temperature
Lights
Motion
Service:
MUR, DND, Other
Moods +
LED Night Light Surround
(Night Light can activate on Motion)

Door Bell with room Number
Services:
MUR
DND
Other
Alarm if Door Forgotten Open

Can Come with Access card Reader as Option*

★ Option to the standard package



Main Features

Included In Every Room Package:

- * Lighting Control
- * Temperature Monitoring
- * AC IR Control & FCU VRF/VRV
- * Moods
- * Super Elegant Universal Touch Panels
- * TV IR Control
- * Motion and Occupancy
- * Night Light activation
- * Online/Offline Operation
- * Ability to control by App
- * Service Request and Door Display
- * LED Backlit Room Number
- * Door Bell Button
- * Alarm If Door forgotten Open
- * Super Energy Saving Included
- * Access Card Reader
- * Door Lock release Connection
- * Receptionist Card Encoder and SW
- * Expandable system (Ungradable)
- *** Including All Backbone Needs & Accessories

- * Optional Lock Strike Release
- * Optional Door Access Cards
- * Optional Chime Ding-Dong

EASY GRMS PACKAGE C

Back Bone

Cool Master Bridge to connect to client's cool master for VRF VRV Air con System (good for 32-64 FCU)



RSIP3 Good for 50 Rooms to communicate 2-way with main server system (PC SQL Server by Client)



Cable Manager++ To Organise S-BUS wires coming from Rooms in Backbone structure of Hotel



1 Power Supply for Backbone

*Chime option (Ding Dong) Can be locally purchased



Energy Saving Master Panel Cuts Room Power if no occupancy based on sensors after door is closed last. Built in 32A Heavy relay 5A relay for other use 24VDC S-Bus Power 12VDC Power supply for lock, PIR, and Chime. Built in Energy Logic

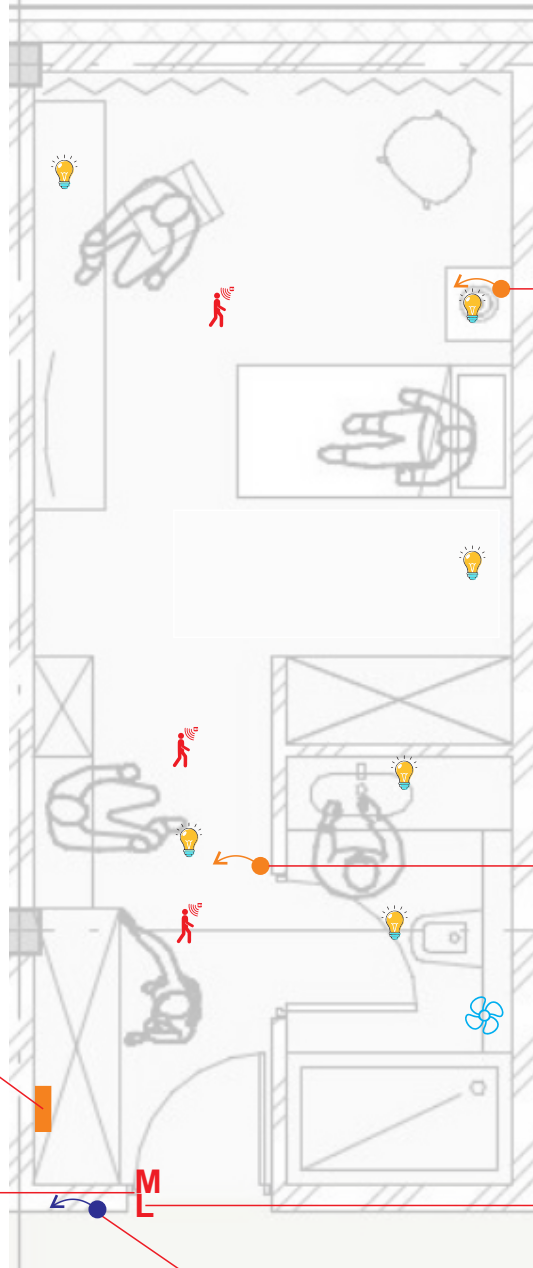


Magnetic Door window Contact For occupancy check trigger and energy saving + Alert if door forgotten open



Service Module at H.Keeping Check in/Out Mood Control and Encoding Energy and Security Module & Moonlighting

G4 GRMS Package C



Online/ Offline System



Easy Touch Panel
Temperature
Lights
Motion
Service:
MUR, DND, Other
Moods +
LED Night Light Surround
IR for TV Or Split AC Control


Can Add Curtain Control and Motor as Option*

Easy Touch Panel
Temperature
Lights
Motion
Service:
MUR, DND, Other
Moods +
LED Night Light Surround (Night Light can activate on Motion)

Door Bell with room Number
Services:
MUR
DND
Other
Alarm if Door Forgotten Open
Access card Reader

Lock Strike Option*

★ Options to the standard package



**Main Features
Included In Every Room Package:**

- * Super Energy Saving
- * Occupancy Status Monitoring
- * Online/Offline Operation
- * Fits any Hotel / Motel / Furnished Apartment
- * Expandable-system (Ungradable)

*** Including All Backbone Needs & Accessories

EASY GRMS PACKAGE D

Back Bone

RSIP3 Good for 50 Rooms to communicate 2-way with main server system (PC SQL Server by Client)



Cable Manager++ To Organise S-BUS wires coming from Rooms in Backbone structure of Hotel



G4 Hotel Energy Package D

Online/ Offline System



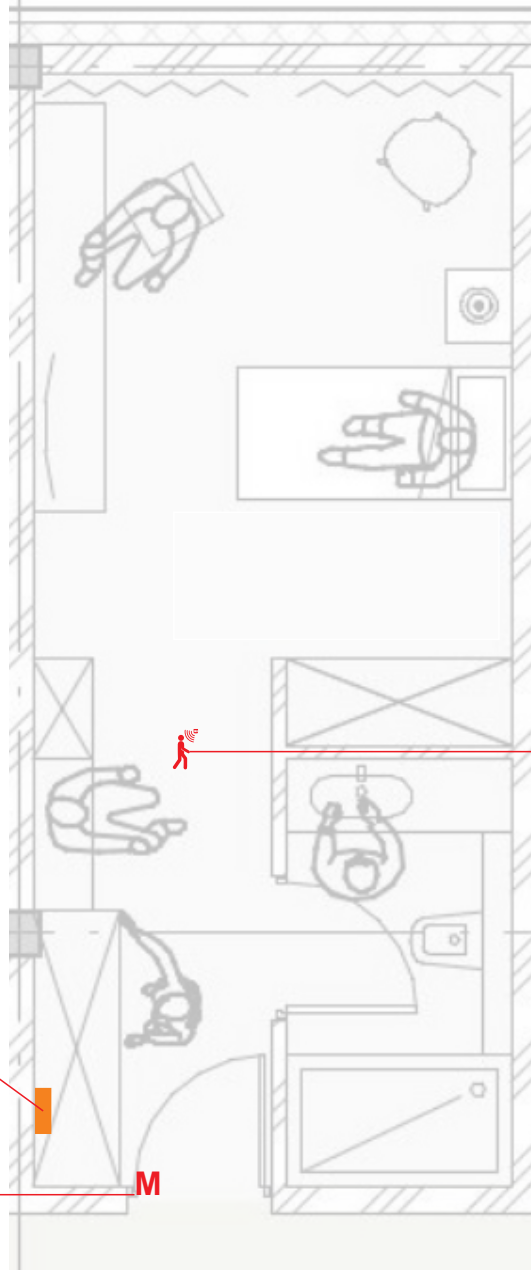
**** This Smart Super Energy Saver Works with or without any Key card Holder and fits both Old built Hotels and New hotels**

1 Power Supply for Backbone

Energy Saving Master Panel Cuts Room Power if no occupancy based on sensors after door is closed last. Built in 32A Heavy relay 5A relay for other use 24VDC S-Bus Power 12VDC Power supply for lock, PIR, and Chime. Built in Energy Logic



Magnetic Door window Contact For occupancy check trigger and energy saving + Alert if door forgotten open

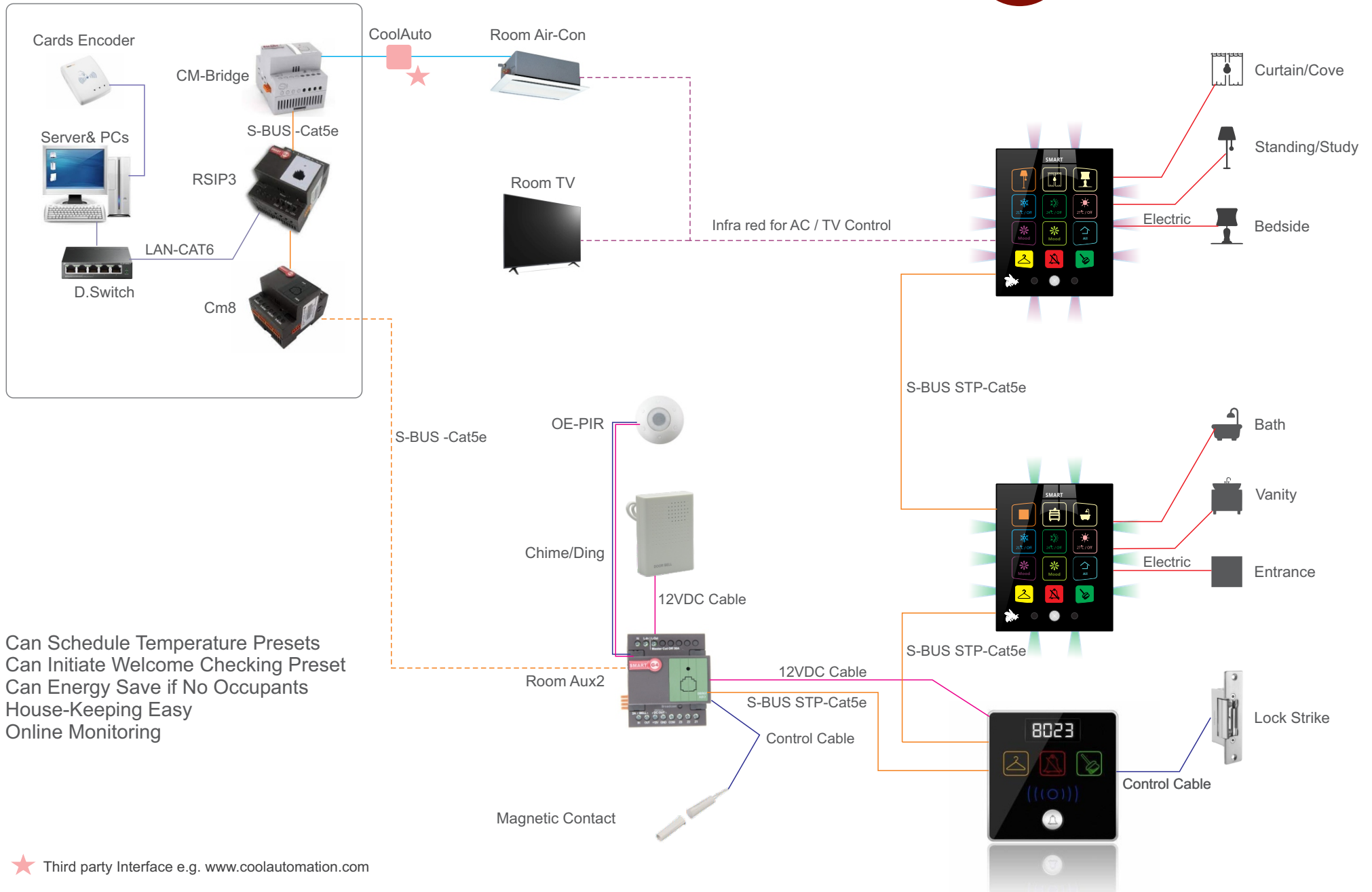


Helps Aux2 in studying Real room Occupancy by detecting motion PIR then Aux uses its other sensor and logics



EASY GRMS Wiring Diagram

G4 EASY GRMS Wiring Diagram



Can Schedule Temperature Presets
 Can Initiate Welcome Checking Preset
 Can Energy Save if No Occupants
 House-Keeping Easy
 Online Monitoring

★ Third party Interface e.g. www.coolautomation.com



CUTTING EDGE

ELEGANT

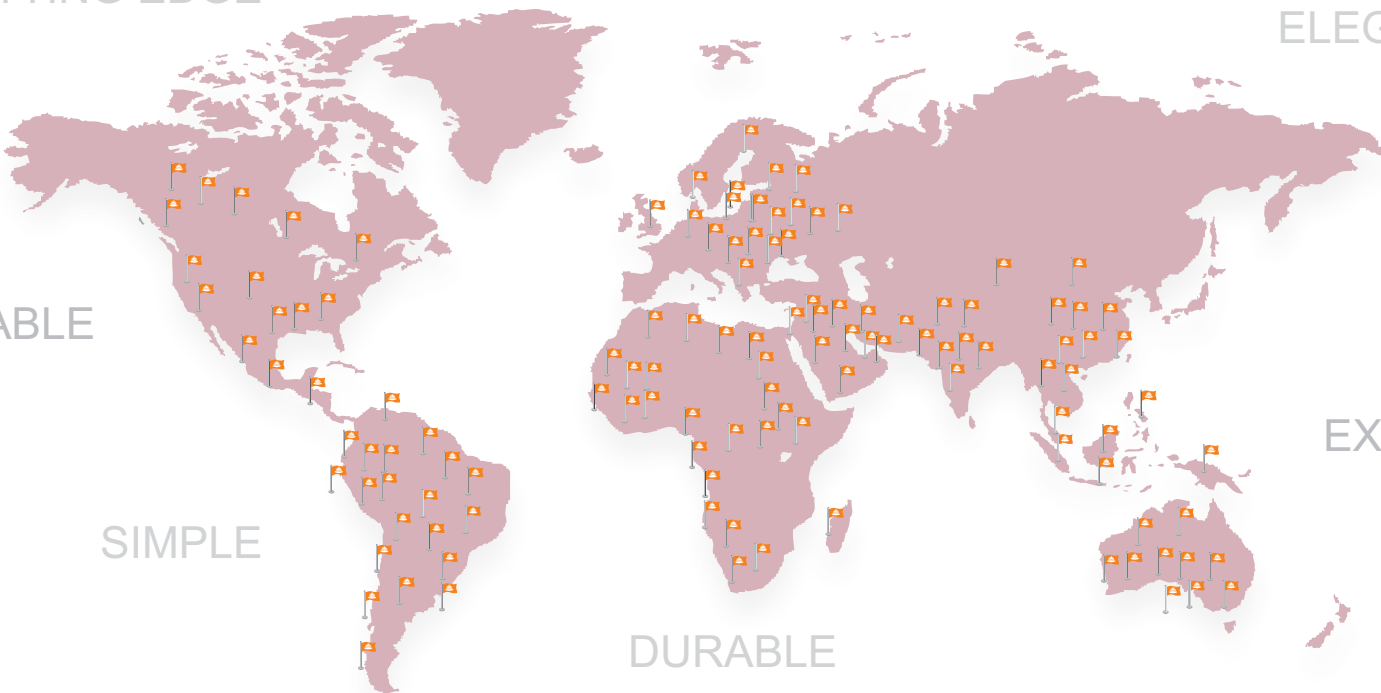
AFFORDABLE

EXPANDABLE

SIMPLE

DURABLE

SMART



www.smartg4.com



SMART Group Americas



Sweden | Nigeria | Canada | Hong Kong | Italy | Dubai