

# Sensors, Detectors, Dry Inputs



# 4-Zone

## Dry Input Module



## 4-Zone Dry Input Module

Smart-BUS enabled (G4) 4000mA LED Driver, 4CH=RGBW 1000W Each, Variable 12-24VDC, (Constant Voltage Control) to give power and control LED Lighting Brightness/ dimming and Color Mixing. Manual Programming Enabled. Good for LED Mood Lightng Control, DC input From Selected Voltage Power Supply. Works As Stand Alone and BUS-Enabled(Constant Voltage LED Only)

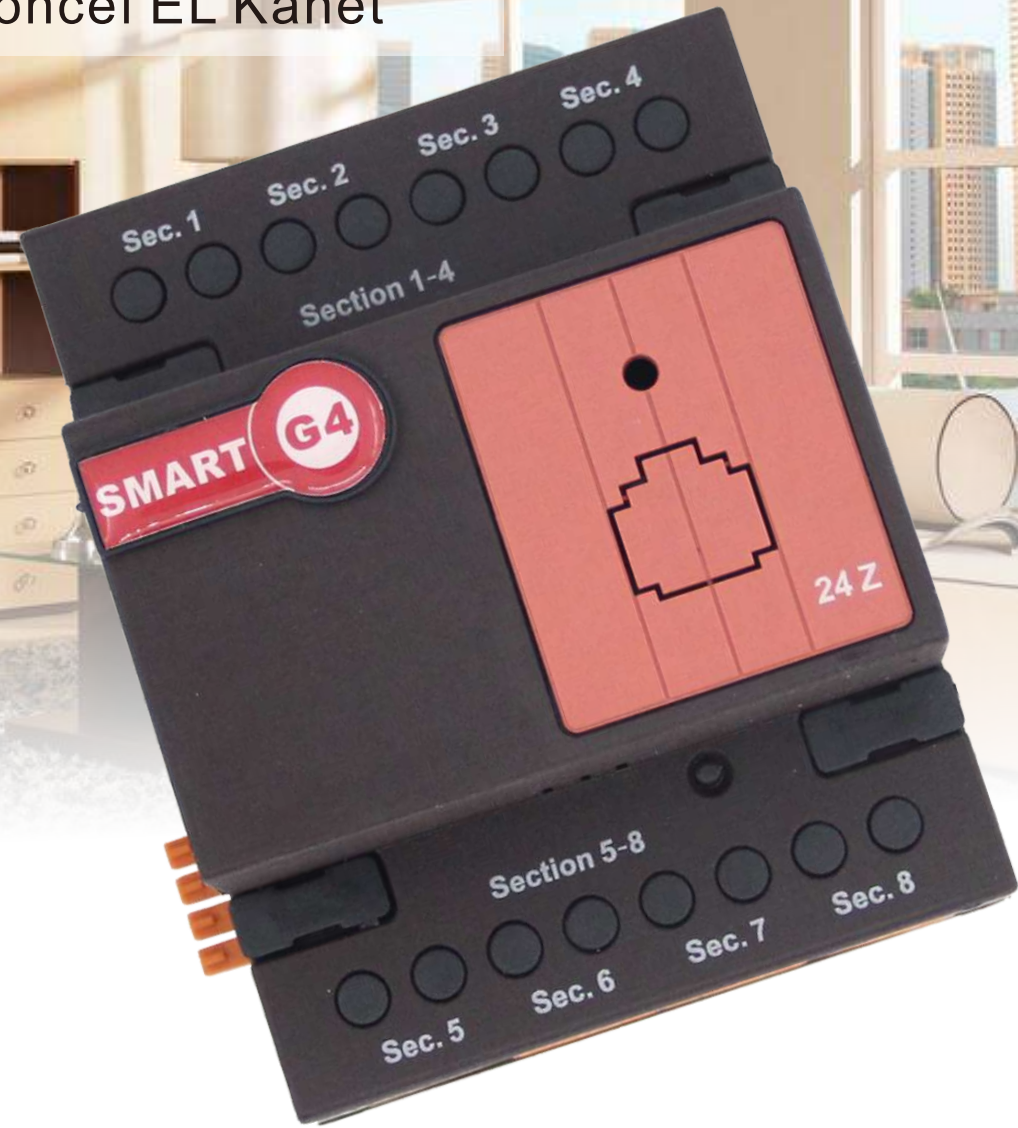


Product Parameter	
Frequency	2.400-2.4835GHZ
Service Life	At least 5 years
Shell	PVC
Size	95mm X 120mm x 15mm (L x W x H)
Weight	50G
Color	Black/ White



# 24-Z

Dry Contact Input by Moncef EL Kanet



## 24-Z Dry Contact Input by Moncef EL Kanet

S-BUS Enabled. 24 NO/NC Volt-free Dry Digital Inputs for Automation Security, Safety, Magnetic contact Sensors or for converting Classical Manual Switches into BUS use. (Built in Intelligence and delay Functions) - Small size can fit behind switch. With Broadcast Enabled, Ready with Firmware USB Upgrade



### Product Parameter

Frequency	2.400-2.4835GHZ
Service Life	At least 5 years
Shell	PVC
Size	95mm X 120mm x 15mm (L x W x H)
Weight	50G
Color	Black/ White

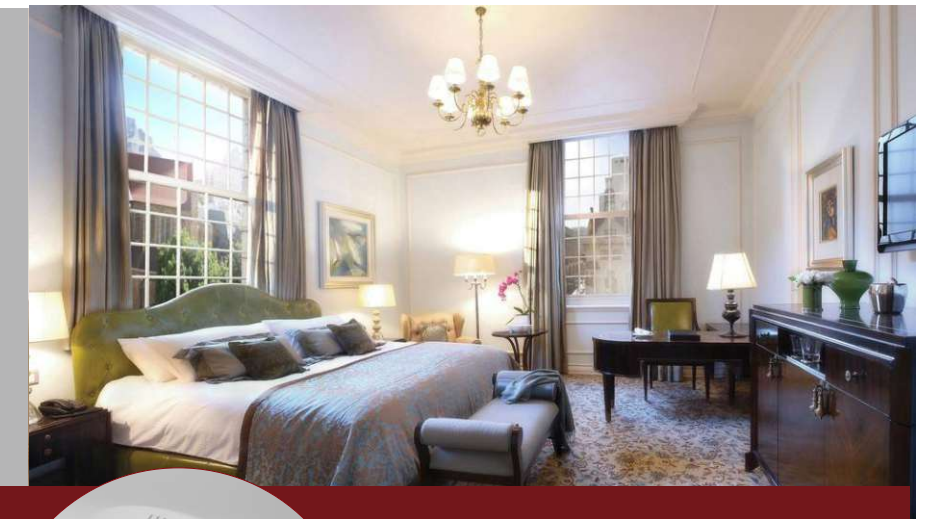
# 9 in 1

## Multifunction Sensor



## 9 in 1 Multifunction Sensor

Bus Enabled (Temperature, PIR/LUX/IR receiver/ 6X360 degrees IR transmitter (250 IR Code Learnable), Two Zone Input contacts 1Z security, 1z safety, (32) Automation and Energy Logics, 3 Addressable Zones Security Enabled) with 99 security codes and functions (away, arm disarm, night++), Distributed Intelligence. (Detection Angle = 110 Degrees, Adjustable detection Range 10 Meters diameter). Direct Pair Enable to HVAC (Manual Programming



### Product Parameter

Frequency	2.400-2.4835GHZ
Service Life	At least 5 years
Shell	PVC
Size	95mm X 120mm x 15mm (L x W x H)
Weight	50G
Color	Black/ White

# 5IPIR Controller



# 5IPIR Controller

S-BUS Enabled. 24 NO/NC Volt-free Dry Digital Inputs for Automation Security, Safety, Magnetic contact Sensors or for converting Classical Manual Switches into BUS use. (Built in Intelligence and delay Functions) - Small size can fit behind switch. With Broadcast Enabled, Ready with Firmware USB Upgrade



## Product Parameter

Frequency	2.400-2.4835GHZ
Service Life	At least 5 years
Shell	PVC
Size	95mm X 120mm x 15mm (L x W x H)
Weight	50G
Color	Black/ White

## CABLES

	Wireless
	S-Bus

Icons	Description
	5IPIR
	IPIR
	IR Control TV & Media
	IR Control Air Condition

# Sensors, Detectors, Dry Inputs



## Sensors, Detectors, Dry Inputs

### People Counter By Bob Dunagan

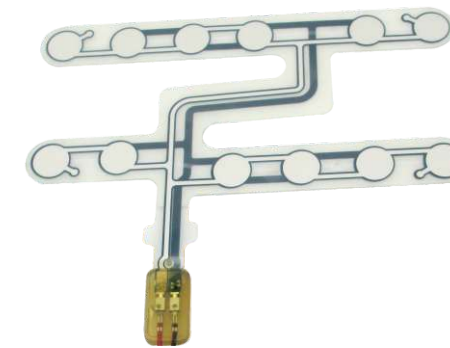
S-BUS Enabled. Wall mountable door Sensor that distinguishes the Person entering from the Person Exiting with Built in 2 Relay that can enable 2 different devices according to logic and flags. Example: Water and Electricity, Exhaust Fan and Lighting, or Other. Hotels require this also for energy as well as moonlighting detection

SB-PC-WL

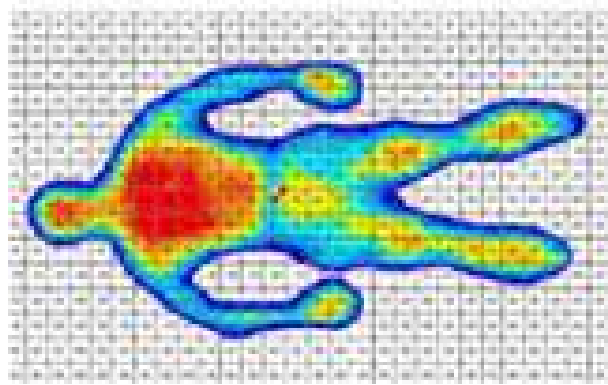
## Sensors, Detectors, Dry Inputs

### Octopus Sensor Mini

simple contact sensor that activates on weight or if bent. This sensor is good for Hospital Use to monitor Patient, elderly with alert in case fall off bed, it can be used for Theater Seating, and for employee ativity measuring



SS-Octopus-FL



SS-Matt-FL

**Sensors, Detectors, Dry Inputs**

**Octopus Blanket**

simple contact sensor as thin Blanket that activates on weight or if bent. This sensor is good for hotels real occupancy, for living room relax on sofas, Hospital Use to monitor Patient, elderly with alert in case fall off bed,

**Sensors, Detectors, Dry Inputs**

**24-Z Dry Contact Input by Moncef EL Kanet**

S-BUS Enabled. 24 NO/NC Volt-free Dry Digital Inputs for Automation Security, Safety, Magnetic contact Sensors or for converting Classical Manual Switches into BUS use. (Built in Intelligence and delay Functions) - Small size can fit behind switch. With Broadcast Enabled, Ready with Firmware USB Upgrade

SB-24Z-DN



SB-4Z-UN

**Sensors, Detectors, Dry Inputs**

**4-Zone Dry Input Module (G4)**

SBus Enabled, 4 NO/NC Volt-free Dry Digital Inputs for Automation Security, Safety, Magnetic contact Sensors or for converting Classical Manual Switches into BUS use. (Built in Intelligence and delay Functions) - Small size can fit behind switch. With Broadcast Enabled, Ready with Firmware USB Upgrade



SS-IPIR-SL

**Sensors, Detectors, Dry Inputs**

**IPIR Sensor Terminal with IR (G4s)**

Spotlight Mountable Motion Sensor and IR Emitter for Control of Wall or Standing Split AC, TV/Media and Other IR Enabled Devices. Small size fits direct into Ceiling Spot Light. Works as a slave and Requires: 5IPIR Controller to enable up to 50 IR Codes storage per IPIR Terminal Port.



SB-9in1T-CL

**Sensors, Detectors, Dry Inputs**

**9 in 1 Multifunction Sensor (G4)**

Bus Enabled (Temperature, PIR/LUX/IR receiver/ 6X360 degrees IR transmitter (250 IR Code Learnable), Two Zone Input contacts 1Z security, 1z safety, (32) Automation and Energy Logics, 3 Addressable Zones Security Enabled) with 99 security codes and functions (away, arm disarm, night ++), Distributed Intelligence. (Detection Angle = 110 Degrees, Adjustable detection Range 10 Meters diameter). Direct Pair Enable to HVAC (Manual Programming Enabled.)



SB-8in1T-CL



SB-6in1T-CL



SB-5in1T-CL



SB-PIR-CL

**Sensors, Detectors, Dry Inputs**

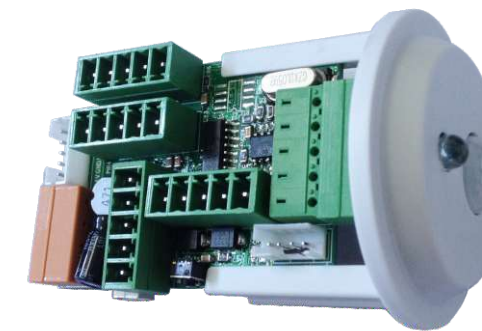
**PIR Motion sensor (Simplified)**

Bus Enabled PIR Motion Sensor (Detection Angle = 110 Degrees, Adjustable detection Range 10 Meters diameter). Direct Pair Enable (Manual Programming Enabled.), 0VDC or 5VDC Output to Connect to 3rd Party Alarm System. (Works 12V and 24V As Stand Alone PIR)

**Sensors, Detectors, Dry Inputs**

**5IPIR Controller (G4s)**

SBUS Enabled Controller direct Slide Mount into IPIR, to provide up to 5 Port control to 5 IPIR terminals. Stores 250 IR Codes, 50 per IPIR Terminal, and Handles 5 Zone Motion, Security and Energy saving. Built in Logic Control. Works with DDP,DDPs and Smartphone Apps. (Best Package with IPIR for Mass Projects)



SB-5IPIR-SL





SB-MW2in1-WL

**Sensors, Detectors, Dry Inputs**

**Microwave & 3PIR Active Occupancy Sensor(G4s)**

Bus Enabled Vandal Proof, Outdoor ( PIR/Ultrasonic/Sound Detector ) with built in Logic, and 2 relays contactors NO/NC. Calibratable sound trigger level, Calibratable Ultrasonic Distance Trigger and Angle, adjustable PIR sensitivity.



SB-USS-CL

**Sensors, Detectors, Dry Inputs**

**Simple Ultrasonic Presense Detector (G5)**

S-BUS Enabled, Simple Detector Senses Human Presense without any need for Movemnet based on Object Obstacle Distance detection compared to Movement .



SB-HBS-CL

**Sensors, Detectors, Dry Inputs**

**Stagnant Human Presense Counter Detector (G5)**

S-BUS Enabled, Special Class Detector that Senses Human Heart Beats Presense Analyser and counter for People within That Space/Area without any need for Movemnet based on Special Beat Algorithm detection



OE-PIR8-WL

**Sensors, Detectors, Dry Inputs**

**Wall/Ceiling Mount PIR Sensor**

Normal NO/NC Enabled 12VDC PIR detection with Dual Element and Tamper switch Built in. Specs: Detection Speed: 0.15~15m/sec, Detection Range 8 Meters. Require (SB-4Z-UN) or Semilar To Link to Smart-BUS



OE-PIR6-CL

**Sensors, Detectors, Dry Inputs**

**Ceiling Mount PIR Sensor**

Normal NO/NC Enabled 12VDC 360 Degrees PIR detection with Dual Element and Tamper switch Built in. Specs: Detection Speed: 0.15~15m/sec, Max Detection Range: 6-8m Diameter at 3m Height. Require (SB-4Z-UN) or Semilar To Link to Smart-BUS



OE-OPIR11-WL

**Sensors, Detectors, Dry Inputs**

**Outdoor Rated PIR with Microwave Detector**

Pet Immune up to 35KG, Normal NO/NC Enabled 12VDC \*2 Dual-Element Pyros PIR detection with Microwave and Tamper switch Built in. Specs: Microwave Frequency: 10.687GHZ, Max Detection Range: 11m. Require (SB- 4Z-UN) or Semilar To Link to Smart-BUS



OE-Mag3-WL

OE-Mag2-WL

**Sensors, Detectors, Dry Inputs**

**Screw Recessed Door/Window mag. contact**

NO Type, Magnet: Neodymium, With 100VDC Voltage Tolerance, Size: 9.5DIA x 32 L mm, Operating Gap: 15-20 / 20-25 mm. (Crew Fixing: For Wooden and Aluminum Door/Window Use)

**Short Recessed Door/Window magnetic contact**

NO Type, Magnet: Neodymium, With 200VDC Voltage Tolerance, Size: 12DIA X 18.5L mm, Operating Gap: 15-20mm. (Tapered Push fix For framed Door/Window Use)



OE-iMag5-FL

OE-iMag7-FL

**Sensors, Detectors, Dry Inputs**

**Mini Industrial Magnetic contact**

NO Type, Magnet: Neodymium, With 200VDC Voltage Tolerance, Size: 49L X 25W X 15H mm, Operating Gap: 50-60mm. (Surface Mount. For Steel Doors, Over head heavy Shutters)

**Industrial Magnetic contact**

NO Type, Magnet: Neodymium, With 130VDC Voltage Tolerance, Size: 105.7L X 50W X 50W mm, Operating Gap: 65-75mm. (Surface Mount with armoured cable, . For Gates, and Heavy Shutters)

**Sensors, Detectors, Dry Inputs**

**5IPIR Controller (G4s)**

SBUS Enabled Controller direct Slide Mount into IPIR, to provide up to 5 Port control to 5 IPIR terminals. Stores 250 IR Codes, 50 per IPIR Terminal, and Handles 5 Zone Motion, Security and Energy saving. Built in Logic Control. Works with DDP,DDPs and Smartphone Apps. (Best Package with IPIR for Mass Projects)

SB-5IPIR-SL

**Sensors, Detectors, Dry Inputs**

**Controller for 2 Ultrasonic Presense Detectors (G5) with Slave 2R**

S-BUS Enabled, Simple Detector Senses Human Presense without any need for Movemnet based on Object Obstacle Distance detection compared to Movement .

SB-2USC-SL

**Sensors, Detectors, Dry Inputs**

**Ultrasonic Presense Detector with Sound Sensor (G5)**

Simple Detector Senses Human Presense without any need for Movemnet based on Object Obstacle Distance detection and Noise level in Area . (Require Controller to Work)

SS-USS-SL



# Centralized Process Controllers

## Applicable Pictures Example:

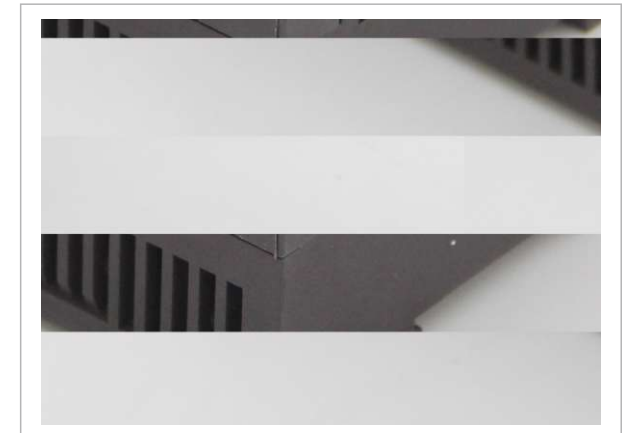
- Homes
- Hotels
- Restaurants
- Luxury Boats
- Schools
- Factories
- Prayer Halls
- Commercial centers



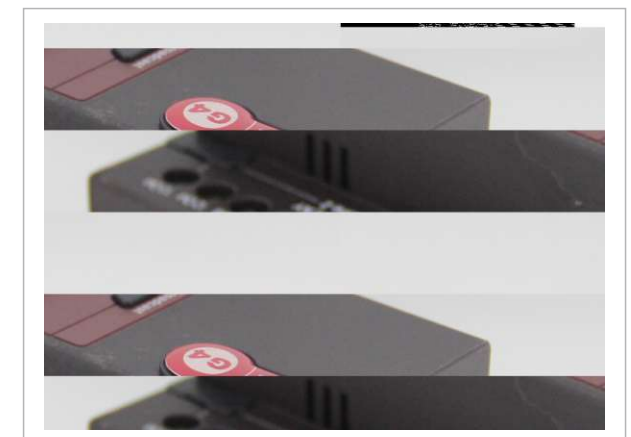
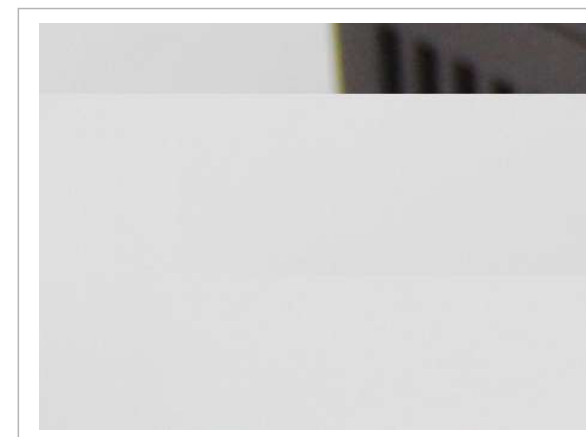
- Homes↑
- Luxury Boats↓



- Hotels↑
- Schools↓



- Prayer Halls↑
- Factories↓



# Security/Safety

## Monitoring Module

Air conditioning

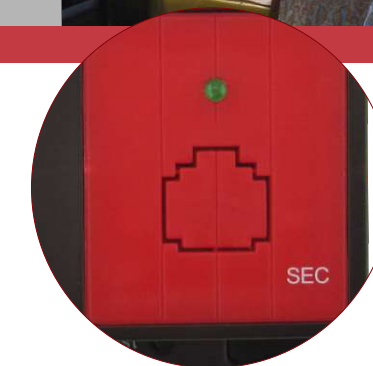
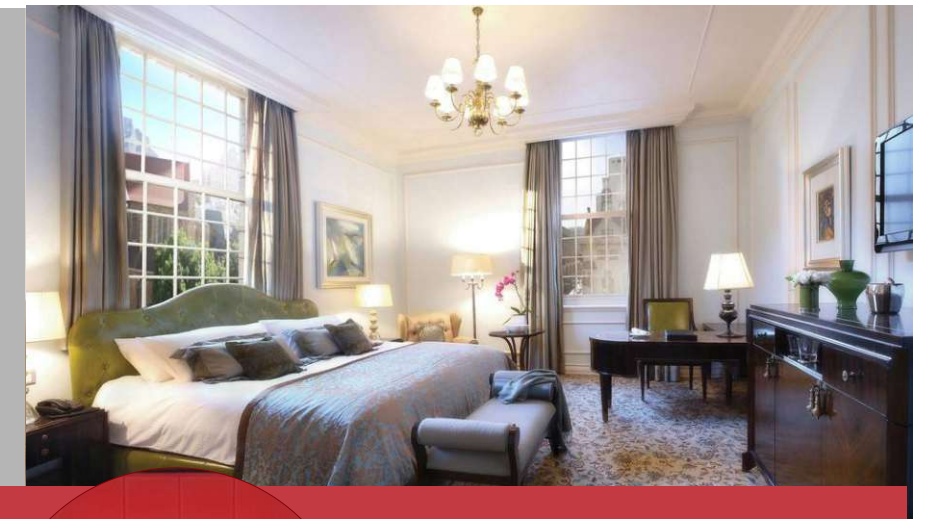
Air cleaner

Security



## Security/Safety Monitoring Module

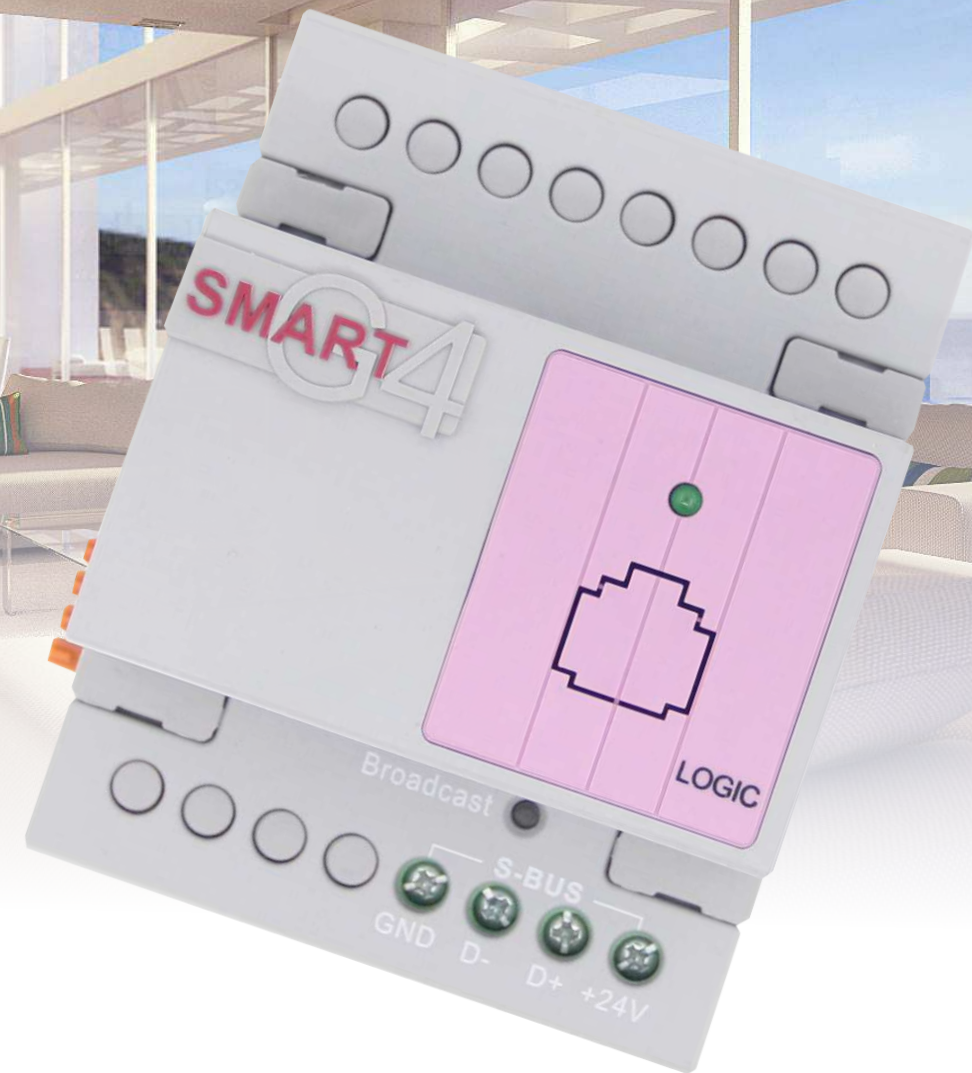
Sbus Enabled, Capable of Handling 250,000 Addressable Zones. Supports 8 different Divisions (Creating 8 Owner Zones inside Building). Auto Arming/ Disarming function Enabled, Arming Modes: Away, Day, Night, Night with Visitor, Vacation schedule and Life dwelling imitation with 9 daily different schedules for Irrigation, Lighting, HVAC, Pumps ++.And If used with Logic Automation Module, then all the following Shall be Enabled: Advanced 15 Lines of Defense functionality Enabled, (Auto Bypass, restore, Day, Night Zone, Arming Delays, Macros, SMS Triggering ++), Auto Gas Shut Off Functionality, Auto HVAC Shut Off in case of Fire ++ In case of Fire ++ In case of Fire ++



### Product Parameter

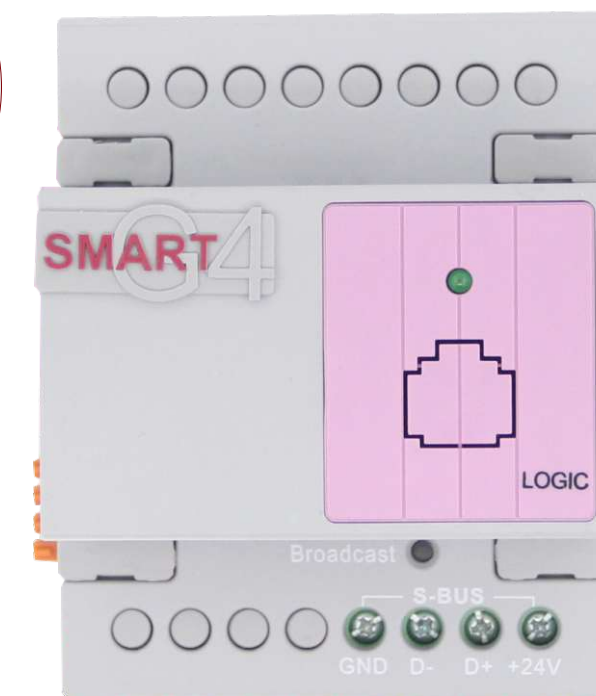
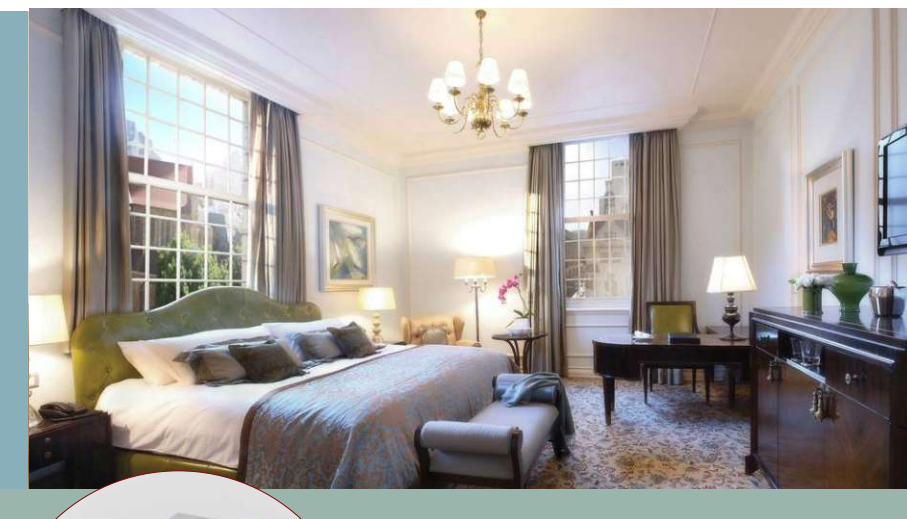
Frequency	2.400-2.4835GHZ
Service Life	At least 5 years
Shell	PVC
Size	95mm X 120mm x 15mm (L x W x H)
Weight	50G
Color	Black/ White

# Automation Logic Module 2



# Automation Logic Module 2

S-BUS Enabled, (240 tables, Each Table of 4 programmable Logic Lines) = 960 Line of Logics Each Module for Advanced Automation Using simplified (and, Or, Nand, Nor, with 255 Flags) Including PTC (Prayer Time City Calculation), Has Built in Time clock broadcast and Central Clock Function, Prayer Times Triggering, and PA Control, Personal & Medical reminders Enabled if Using Z-Audio2 with Our SD Card Prompts Preset. USB FW upgrade Enabled



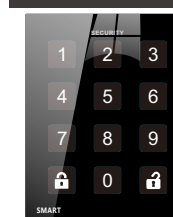
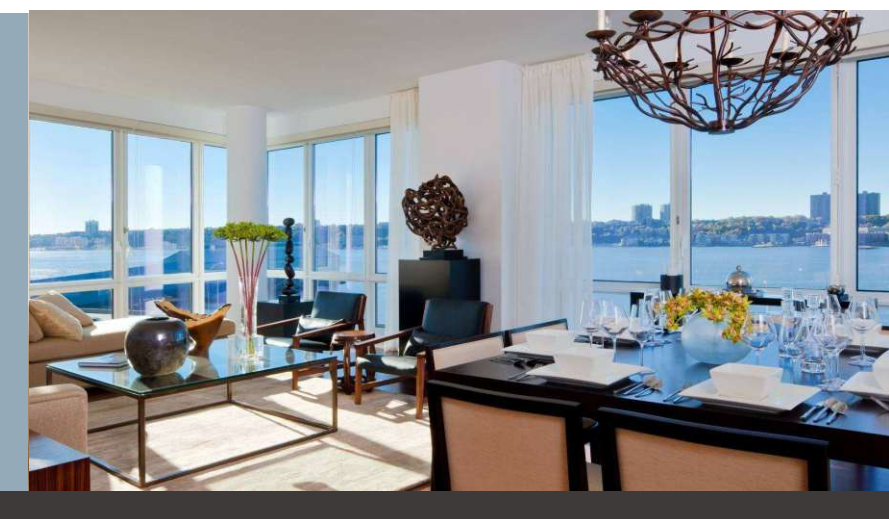
Product Parameter	
Frequency	2.400-2.4835GHZ
Service Life	At least 5 years
Shell	PVC
Size	95mm X 120mm x 15mm (L x W x H)
Weight	50G
Color	Black/ White

# Security Code Keypad (Arm/Disarm)



# Security Code Keypad (Arm/Disarm)

Smart-BUS enabled Security Code Arming / Disarming. Security Touch Pad with Logging. Enables Multi codes with action macros and triggers based on Entry Code/Person. Slim, Bracket Wall mount, Universal Backbox



**CONNECTION**

SBUS

SBUS

SBUS

Product Parameter	
Frequency	2.400-2.4835GHZ
Service Life	At least 5 years
Shell	PVC
Size	95mm X 120mm x 15mm (L x W x H)
Weight	50G
Color	Black/ White

## FEATURES:

- 20 Security Passwords
- Tamper Alarm and SMS Trigger
- Time, Date, ID, action stamp Log
- Easy Arm, Easy Disarm
- SBUS Enabled
- Installer Password protected
- Smart-Cloud Configurable
- Cloud Log Download
- Can Trigger Universal switches to drive Macros

# Centralized Process Controllers



SB-SEC250K-DN

## Centralized Process Controllers

### Security/Safety Monitoring Module (G4)

Sbus Enabled, Capable of Handling 250,000 Addressable Zones. Supports 8 different Divisions (Creating 8 Owner Zones inside Building). Auto Arming/ Disarming function Enabled, Arming Modes: Away, Day, Night, Night with Visitor, Vacation schedule and Life dwelling immitation with 9 daily different schedules for Irrigation, Lighting, HVAC, Pumps ++.

And If used with Logic Automation Module, then all the following Shall be Enabled: Advanced 15 Lines of Defense functionality Enabled, (Auto Bypass, restore, Day, Night Zone, Arming Delays, Macros, SMS Triggering ++), Auto Gas Shut Off Functionality, Auto HVAC Control In case of Fire ++



SB-Logic2-DN

## Centralized Process Controllers

### Automation Logic Module 2 (G4)

S-BUS Enabled, (240 tables, Each Table of 4 programmable Logic Lines) = 960 Line of Logics Each Module for Advanced Automation Using simplified (and, Or, Nand, Nor, with 255 Flags) Including PTC (Prayer Time City Calculation), Has Built in Time clock broadcast and Central Clock Function, Prayer Times Triggering, and PA Control, Personal & Medical reminders Enabled if Using Z-Audio2 with Our SD Card Prompts Preset. USB FW upgrade Enabled



### Security Code Keypad

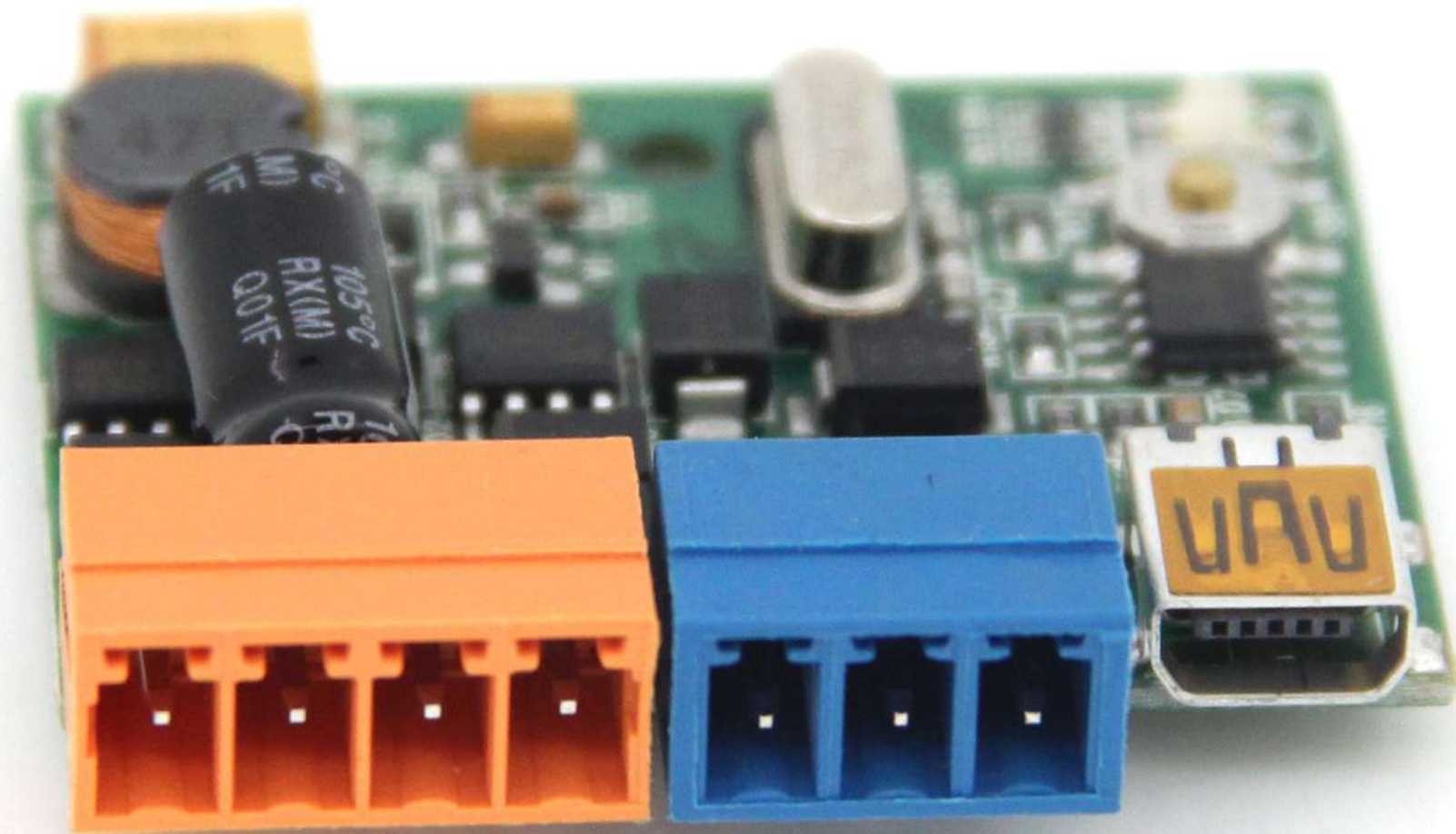


# Communication and Integration Bridges+Links



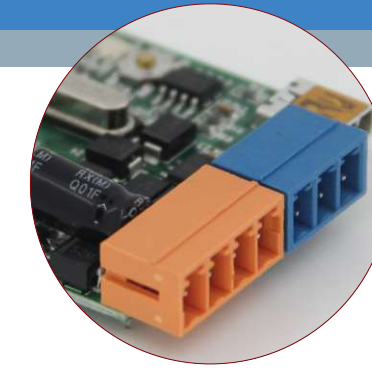
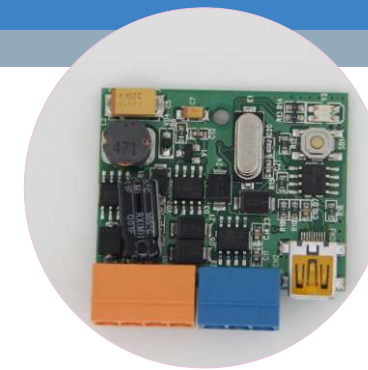
# C-Touch

Bridge / Dnake Bridge By Boaz



## C-Touch Bridge / Dnake Bridge By Boaz

Home Automation Bridge Link for C-Touch with Memory Bank



Product Parameter	
Frequency	2.400-2.4835GHZ
Service Life	At least 5 years
Shell	PVC
Size	95mm X 120mm x 15mm (L x W x H)
Weight	50G
Color	Black/ White

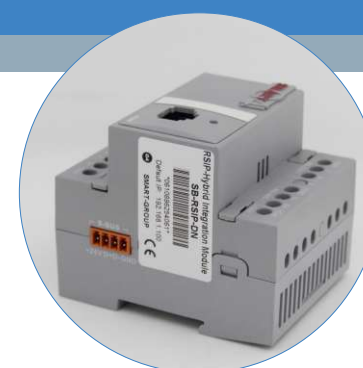


# Hybrid Integration LinK with IP



# Hybrid Integration LinK with IP

DIN-Rail Mount, with BUS, RS232, 485 & IP/UDP Bridged Converter, can send up to 1980 Strings, & Can receive up to 99 ASCII and/or HEX strings, work in all Baud Rates, 2-way Functionality for integration and status Update. UDP and DDNS (Good For User Input Applications)



Product Parameter	
Frequency	2.400-2.4835GHZ
Service Life	At least 5 years
Shell	PVC
Size	95mm X 120mm x 15mm (L x W x H)
Weight	50G
Color	Black/ White



# S-BUS to DMX 48 Bridge Module by HDL



# S-BUS to DMX 48 Bridge Module by HDL

DIN-Rail Mount, 48 Channels DMX Scene Controller, Smart-BUS Enabled



Product Parameter	
Frequency	2.400-2.4835GHZ
Service Life	At least 5 years
Shell	PVC
Size	95mm X 120mm x 15mm (L x W x H)
Weight	50G
Color	Black/ White

# SMS

## Module Remote control and Monitoring

gas leak

SMS Module

gas leak!

# SMS Module Remote control and Monitoring

SBUS enabled SMS Module Capable of Sending and Receiving Multiple Messages to/from Multiple Numbers for Performance and Monitoring of Activity, Mood, Energy, Lighting ++. Great for Security Monitoring. Built in Sensor Ports, Audio Speaker Port, Microphone Plug Port to enable Communication Between Base and Remote Phones from anywhere in the world. (Soon to Add Gate GSM Function)



Product Parameter

Frequency	2.400-2.4835GHZ
Service Life	At least 5 years
Shell	PVC
Size	95mm X 120mm x 15mm (L x W x H)
Weight	50G
Color	Black/ White



# USB to SBUS Bridge



# USB to SBUS Bridge

This simple Bridge help Directly convert any USB enabled system to communicate direct with SBUS devices. This converter works with Apple, IOS, PC, Android and Linux to Sbus Directly. Target is allowing more developpers to use Their existing systems to connect to S-BUS at very low cost and in ease. The device also Provides 5V Output for Charging of Tablets ++



Product Parameter	
Frequency	2.400-2.4835GHZ
Service Life	At least 5 years
Shell	PVC
Size	95mm X 120mm x 15mm (L x W x H)
Weight	50G
Color	Black/ White

## Communication and Integration Bridges+Links

### Communication and Integration Bridges+Links

#### SMS Module Remote control and Monitoring (G4s)

SBUS enabled SMS Module Capable of Sending and Receiving Multiple Messages to/from Multiple Numbers for Performance and Monitoring of Activity, Mood, Energy, Lighting ++. Great for Security Monitoring. Built in Sensor Ports, Audio Speaker Port, Microphone Plug Port to enable Communication Between Base and Remote Phones from anywhere in the world. (Soon to Add Gate GSM Function)

SB-SMS-FL

### Communication and Integration Bridges+Links

#### TCP Bridge (G4s)

DIN-Rail Mount, SBUS to TCP/IP Bridge Converter, 2-way Functionality for HTML5 and other Developer Apps and Links utilization. Acts as DDNS Gateway for Remote control and Monitoring or Data collection Online



SB-TCP-Link

SB-RSIP-DN

Communication and Integration Bridges+Links

**Hybrid Integration LinK with IP (G4s)**

DIN-Rail Mount, with BUS, RS232, 485 & IP/UDP Bridged Converter, can send up to 1980 Strings, & Can receive up to 99 ASCII and/or HEX strings, work in all Baud Rates, 2-way Functionality for integration and status Update. UDP and DDNS (Good For User Input Applications)



SB-RS232H-DN

SB-RS232N-DN

Communication and Integration Bridges+Links

**S-BUS to RS232 Module For "HAI" Integration (G3)**

DIN-Rail Mount, Preloaded Protocol (Direct HAI Security 2-way integration )



SB-DMX48-DN

SB-DMX512-DN

Communication and Integration Bridges+Links

**DALI Bridge II Module (G5)**

Smart-BUS Enabled Bridge, DIN-Rail Mount, 64 Channels Broadcast DALI Scene Controller  
DALI Ballast Controller

Communication and Integration Bridges+Links

**S-BUS to DMX 48 Bridge Module**

DIN-Rail Mount, 48 Channels DMX Scene Controller, Smart-BUS Enabled

**S-BUS to DMX 512 Bridge Module**

DIN-Rail Mount, 512 Channels DMX Scene Controller, Smart-BUS Enabled



SBW-Bridge-FL

Communication and Integration Bridges+Links

**S-Wave Wifi Bridge (G4s)**

Extremely Elegant Table Top Box. Enabled with Swave-III Technology and Range up to 1000 Meters LOS. Ready with S-BUS, WiFi and LAN connections. Helps Create Complete Home Mesh as Plug and Play. (Works Direct with S-Wave Scan Software.)



SB-KNX-Link

Communication and Integration Bridges+Links

**KNX-Bridge By Seawin**

KNX to S-BUS, TCP, RS-232, MODBUS Bridge Converter Link 2- way

Communication and Integration Bridges+Links

**C-Touch Bridge**

Home Automation Bridge Link for C-Touch with Memory Bank

SB-CTouch-Link

Communication and Integration Bridges+Links

**Denake- Bridge**

Home Automation Bridge Link for Denake with Memory Bank

SB-Denake-Link



SB-SDK-DN

**Communication and Integration Bridges+Links**

**S-BUS to 3rd Party Integration SDK Tool (G5)**

DIN-Rail Mount, SDK tool for Bridging any Third Party and Trouble shooting



SB-RS232D-DN

**Communication and Integration Bridges+Links**

**S-BUS to RS232 Module For "Cool Master / Daiken" Integration (G3)**

DIN-Rail Mount, Preloaded Protocol (Direct Nuvo Music 2-way integration interface for G series with M3 server, T2 tuner, and Novo RIPS, WIPS Ipod Doc)

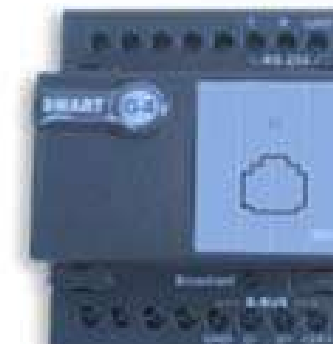


SB-EKVRV-Link

**Communication and Integration Bridges+Links**

**EK-VRV-Bridge (G4s) By Philip Gan**

SBUS Enabled, Euro Klimate Airconditioning VRF Variable Refregirent Flow Control. Good for 60 EK FCU/AHU Units



SB-GREEVRV-Link

**Communication and Integration Bridges+Links**

**Gree VRV-Bridge (G4s) By Hani Marie**

SBUS Enabled, Gree Airconditioning VRV Variable Refregirent Volume Control. Good for 60 Gree FCU/AHU Units. This Module also Works for Panasonic and Sanyo VRV.



**Communication and Integration Bridges+Links**

**USB to SBUS Bridge**

# Metering



# 24 Port CT

Reader with Alert By Philip Gan



# 24 Port CT Reader with Alert By Philip Gan

S-BUS Ready 24 Current Sensors Input Ports. (24 Power Meters in One) High Sensitivity Design for BMS Lighting Channel Monitoring and Fixtures Replacement Maintenance. Helps for Energy Managment, Wastage Monitoring, Metering and Billing, Maintenance Planning of (Airconditioning Filters, Light Bulbs Replacements ... etc).



## Product Parameter

Frequency	2.400-2.4835GHZ
Service Life	At least 5 years
Shell	PVC
Size	95mm X 120mm x 15mm (L x W x H)
Weight	50G
Color	Black/ White

# Impulse Metering

Module by Tanel Kukk



## Impulse Metering Module by Tanel Kukk

Bus Enabled, Volt-free Digital Impulse Metering for Connection to Third Party Meters: BTU, GAS, Electrical, Water++), Built In Memore with Date/hour Serch (12 Month Memory) for 1 Channel, Initial reading input, Download and reset to free Memory Functions) - Small size can fit behind switch. With Broadcast Enabled, Ready with Firmware USB Upgrade



Product Parameter	
Frequency	2.400-2.4835GHZ
Service Life	At least 5 years
Shell	PVC
Size	95mm X 120mm x 15mm (L x W x H)
Weight	50G
Color	Black/ White



# Metering



SB-Impulse-UN

Metering

### Impulse Metering Module (G4)

Bus Enabled, Volt-free Digital Impulse Metering for Connection to Third Party Meters: BTU, GAS, Electrical, Water+ +), Built In Memore with Date/hour Serch (12 Month Memory) for 1 Channel, Initial reading input, Download and reset to free Memory Functions) - Small size can fit behind switch. With Broadcast Enabled, Ready with Firmware USB Upgrade

Metering

### S-BUS Power Meter Module (G3)

DIN-Rail Mount, 3Phase Power Meter with Exponential Connection to 5A Transformers, Smart-BUS Enabled

SB-PM5-DN



SB-24CTR-DN

Metering

### 24 Port CT Reader with Alert By Philip Gan (G4s)

S-BUS Ready 24 Current Sensors Input Ports. High Sensitivity Design for BMS Lighting Channel Monitoring and Fixtures Replacement Maintenance



OE-CT-FL

Metering

### Mini CT Clamp Pack of (6)

High Sensitivity Current Transformer Easy Clamp-On Type. For use with SB-24CTR-DN



SB-3PHM-TIS

Metering

### 3Phase Protector and 3 Phase Meter By MT

# BMS Parts Other

## Applicable Pictures Example:

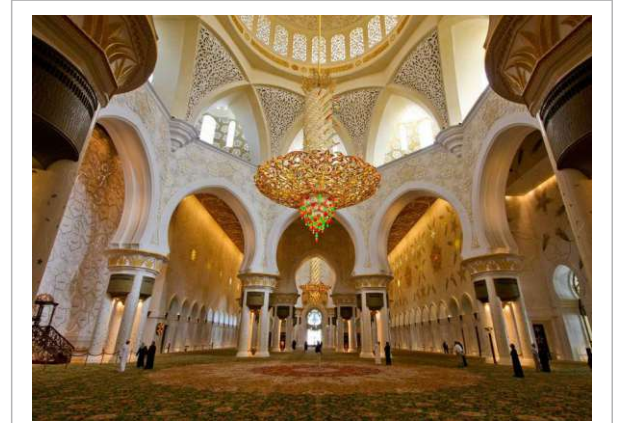
• Homes • Hotels • Restaurants • Luxury Boats • Schools • Factories • Prayer Halls • Commercial centers



• Homes↑  
• Luxury Boats↓



• Hotels↑  
• Schools↓



• Prayer Halls↑  
• Factories↓



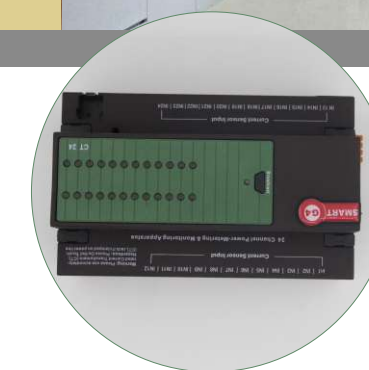


# Water Flow Detector



# Water Flow Detector

Gives Trigger Signal (Digital Discrete NO/NC) that can Help in Monitoring or diving Automation Events once water flow is detected.



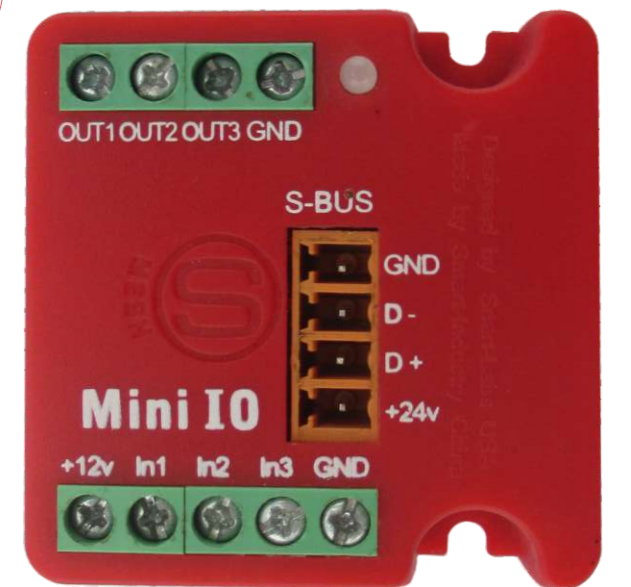
Product Parameter	
Frequency	2.400-2.4835GHZ
Service Life	At least 5 years
Shell	PVC
Size	95mm X 120mm x 15mm (L x W x H)
Weight	50G
Color	Black/ White

# Mini I/O Module



# Mini I/O Module

SBUS Enabled Input and Output Module. Accepts 3 inputs and 3 Outputs, Software configurables as following: Inputs: electrical 0-5V Analogue 0-10V, 0-15V,, 0.1-1mA, 1-4mA, 4-20mA, 20-60mA. Output: 0 or 5V. This Device is Great for Measuring of Tank Levels, Humidity, Temperature, Speed, Pressure, water Leakage, Tel line Connectivity, Current, and to control Voltage triggered Devices.



Product Parameter

Frequency	2.400-2.4835GHZ
Service Life	At least 5 years
Shell	PVC
Size	95mm X 120mm x 15mm (L x W x H)
Weight	50G
Color	Black/ White

# Mini Siren with Strobe



## Mini Siren with Strobe

12VDC Driven, Size: 89.5 DIA X 59.5 DIA X 42.5H mm, SPL DB/1M: 105±3, Tone: Warble, Strobe: Red or Blue (Options).  
Can be Fitted on Ceiling or on Wall



Product Parameter	
Frequency	2.400-2.4835GHZ
Service Life	At least 5 years
Shell	PVC
Size	95mm X 120mm x 15mm (L x W x H)
Weight	50G
Color	Black/ White

# Wall Siren with Flasher Strobe



## Wall Siren with Flasher Strobe

12VDC Driven, Size: 210L X 130W X 78H mm, SPL DB/1M: 112±3, Tone: Warble, Strobe: Red or Blue (Options). (For both Indoor and Outdoor Usage). Can be fixed on Ceiling or Wall



Product Parameter

Frequency	2.400-2.4835GHZ
Service Life	At least 5 years
Shell	PVC
Size	95mm X 120mm x 15mm (L x W x H)
Weight	50G
Color	Black/ White

# BMS Parts Other



SB-IO-UN

## BMS Parts Other

### Mini I/O Module (G4s)

SBUS Enabled Input and Output Module. Accepts 3 inputs and 3 Outputs, Software configurables as following: Inputs: electrical 0-5V Analogue 0-10V, 0- 15V, 0.1-1mA, 1-4mA, 4-20mA, 20-60mA. Output: 0 or 5V. This Device is Great for Measuring of Tank Levels, Humidity, Temperature, Speed, Pressure, water Leakage, Tel line Connectivity, Current, and to control Voltage triggered Devices.

## BMS Parts Other

### Water Leak Detector

Simple Analogue Detector to connect to 12VDC Rated Detectors (Like I/O). Max Wire Length = 18cm. Operating Current: 200mA, Standby=1mA \*\*(Requires Mini I/O to Operate)

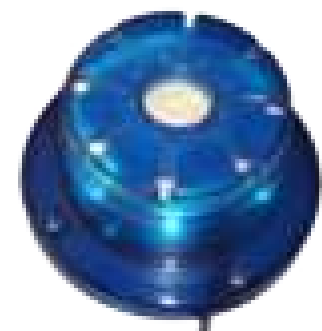
OE-WLeak-UN

OE-SF-UN

BMS Parts Other

### Wall Siren with Flasher Strobe

12VDC Driven, Size: 210L X 130W X 78H mm, SPL DB/1M: 112±3, Tone: Warble, Strobe: Red or Blue (Options). (For both Indoor and Outdoor Usage). Can be fixed on Ceiling or Wall



OE-MiniSF-UN

BMS Parts Other

### Mini Siren with Strobe

12VDC Driven, Size: 89.5 DIA X 59.5DIA X 42.5H mm, SPL DB/1M: 105±3, Tone: Warble, Strobe: Red or Blue (Options). Can be Fitted on Ceiling or on Wall

BMS Parts Other

### Water Flow Detector

Gives Trigger Signal (Digital Discrete NO/NC) that can Help in Monitoring or diving Automation Events once water flow is detected.

OE-Wflow