



CASE STUDY BY HARWINDER MATHAROO

BEAUTIFUL MINDS BEAUTIFUL IDEAS

WHERE HAS HOTEL AUTOMATION REACHED IN 2022!

A CASE STUDY BASED ON REAL
LIVE EXAMPLE FROM MOST
AGGRESSIVE BRANDS IN HOTEL
GRMS AND BULIDING
AUTOMATION INDUSTRY TODAY

IN THIS STUDY WE SHALL ANSWER ALL
THE FOLLOWING QUESTIONS AND MORE



CAN AUTOMATION ADD
VALUE TO HOTELS ?

HOW MANY ROOM
NIGHT ITS TAKES TO
COVER UP THE
IVESTMENTS ?

WHAT ARE THE NEW
REMARKAKEBLE
FEATURESEEN ?

CASE STUDY
BY HARWINDER MATHAROO
+919821038479
hmd.inn@gmail.com

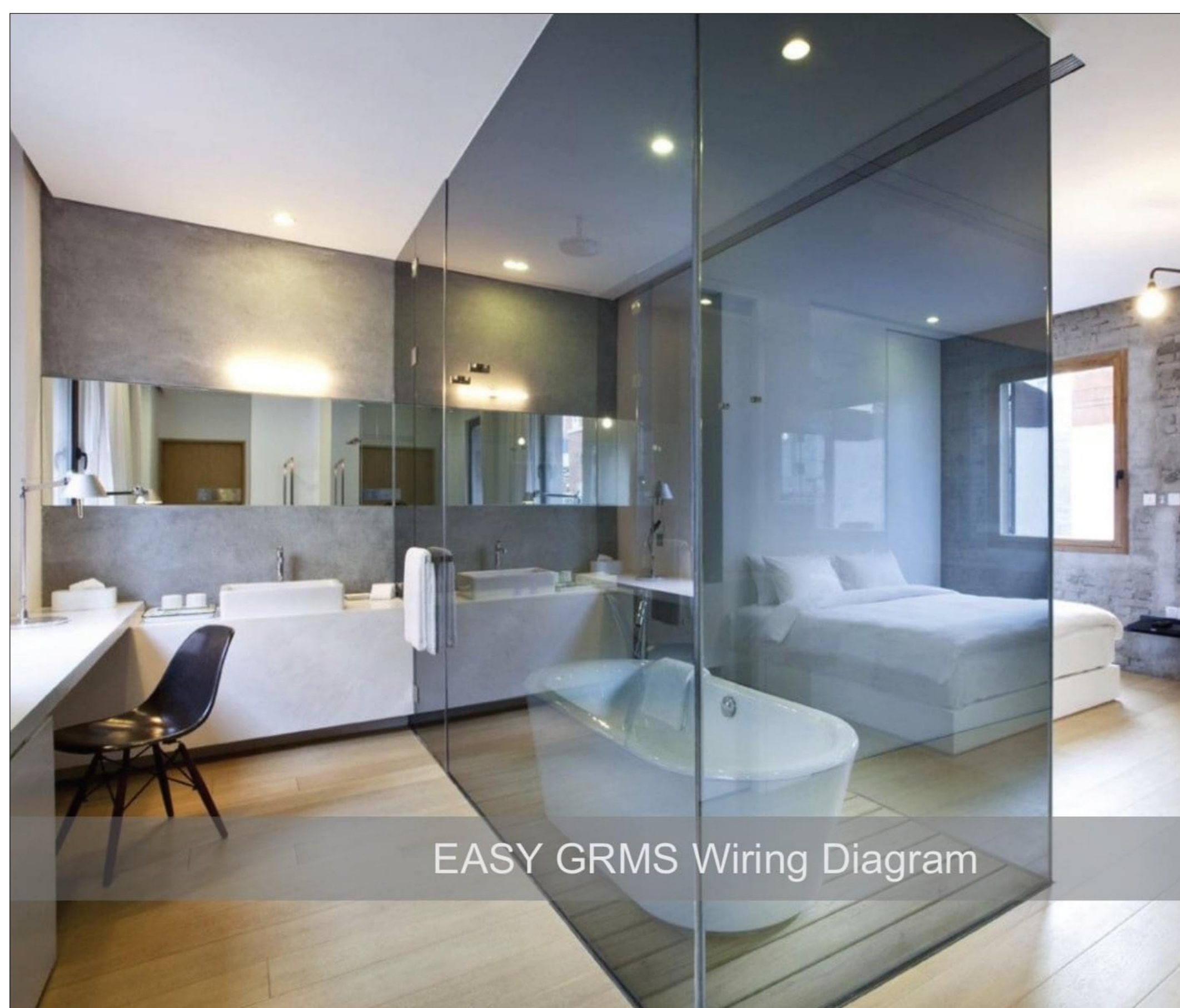


**CAN WE ADD MORE STAR
DOES IT APPLY TO ALL HOTELS & MOTELS
WHICH BRANDS & TECNOLOGY AVAILABLE**

SMART HOTEL CASE STUDY



7 Star Hotels, Bahrain Business Bay



EASY GRMS Wiring Diagram

CAN AUTOMATION ADD VALUE TO HOTELS?

MANY ARCHITECTS AND INTERIOR DESIGNERS HAVE BEEN ASKING ME RECENTLY THIS VERY VITAL QUESTION! I WAS ASKED BECAUSE I WORKED CLOSELY AND TOOK MANY AUTOMATION TECHNOLOGY TRAININGS, AND IMPLEMENTED IN MANY OF MY PROJECTS LATELY.

IN SHORT I CAN LIST SOME OF THE FEATURES THAT CAN REALLY ADD VALUE TO THE HOTEL PROPERTY. SOME ARE DIRECT AND TANGIBLE, OTHERS ARE INDIRECT AND CAN BE SENSED OVER TIME.

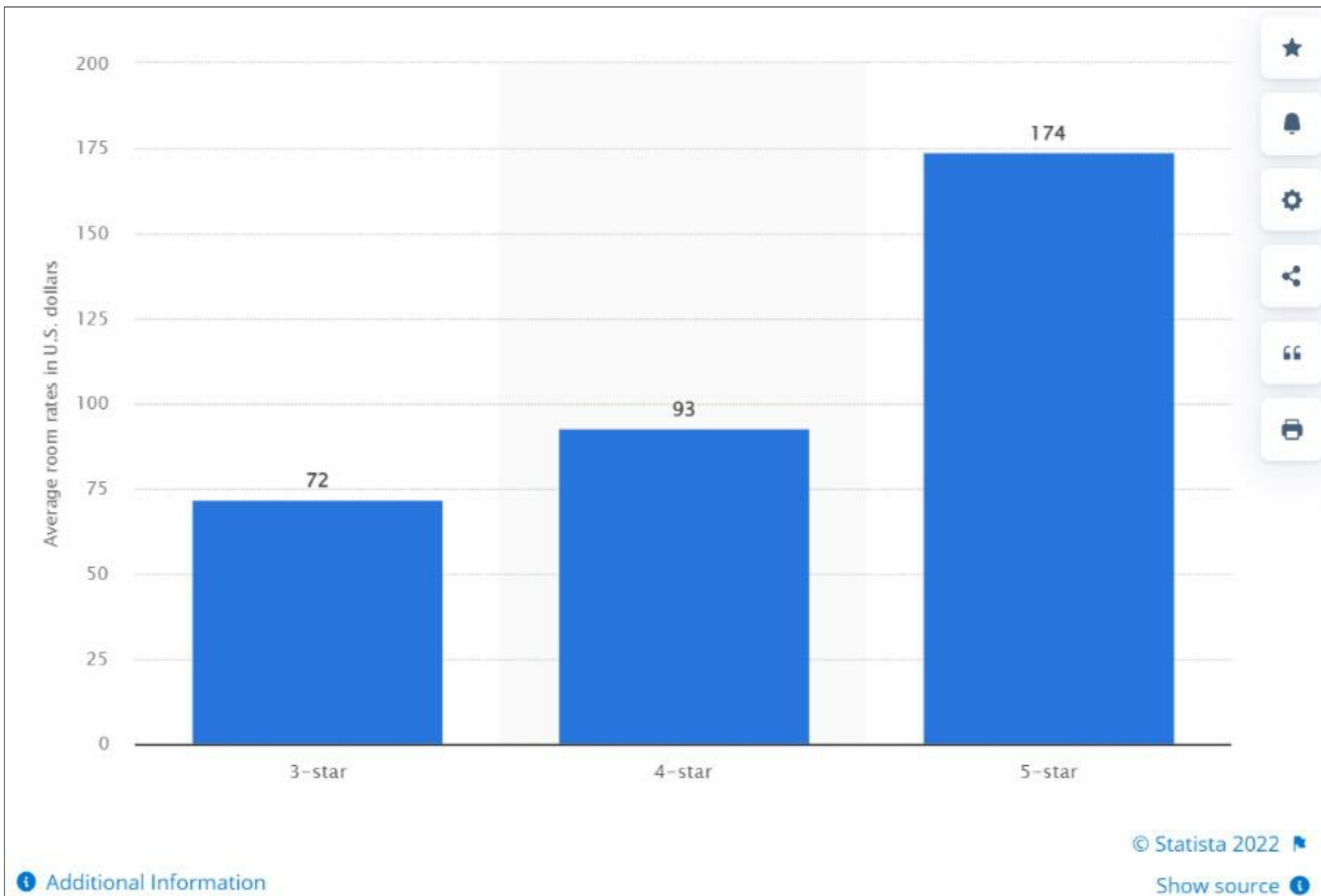
I SHALL START WITH THE TANGIBLE VALUE ADDED FEATUR

AS WHEN USING SMART HOTEL GRMS (GUEST ROOM MANAGEMENT SYSTEM):

- 1- HOTEL CAN SAVE ENERGY
- 2- GRMS ADDS ELEGANCE AND APPEAL
- 3- GRMS ADDS TO THE COMFORT
- 4- GRMS HELP HOTEL OWNER TO ADD ONE MORE STAR TO ITS RATING
- 5- GRMS ADDS TO HOTEL SECURITY
- 6- GRMS ADDS TO SERVICE
 - A. SPEED
 - B. QUALITY
- 7- HOTEL CAN MONITOR AND ANALYZE OTHER INDIRECT OR INTANGIBLE FEATURES:
- 8- DECREASES EQUIPMENT & FIXTURES MAINTENANCE NEED
- 9- ADDS TO NAME FAME AND LOYALTY
- 10- PREVENTS MOONLIGHTING
- 11- PROTECTS FURNITURE



HOW MANY ROOM NIGHTS IT TAKES TO COVER UP THE INVESTMENT?



ROOM NIGHT COST VARIES BASED ON SEASON, CITY, AND NUMBER OF STAR RATING OF THE HOTEL.

IF WE TAKE AVERAGE BASED ON THE CHART ON LEFT SIDE AS A GUIDE TO HELP US ANSWER THIS QUESTION WITH A BASE, THEN WE CAN SAY THAT ROI CAN BE ACHIEVED WITHIN:

- * 2-3 NIGHTS FOR 5-STAR HOTELS,
- * 4-5 NIGHTS FOR 4-STAR HOTELS,
- * 5-7 NIGHTS FOR 3-STAR HOTELS

IF APPLYING THE SAME GRMS SYSTEM EXAMPLE.



G4 GRMS Packages 2022:

| | |
|-----------|--|
| Package A | Lighting - Energy - Easy Control - Moods |
| Package B | Lighting - Super Energy - Easy Control - Moods Door Bell - Door Service - Room Number |
| Package C | Lighting - Super Energy - Easy Control - Moods Door Bell - Door Service - Room Number Access Control - Check in Encoding |
| Package D | Pure Energy Saving for Any Hotel/Motel |

I HAVE WORKED WITH DIFFERENT HOTEL GRMS PACKAGES THAT COST AS LOW AS

68 USD FOR THE PACKAGE D

92 USD FOR THE PACKAGE A

188 USD FOR PACKAGE B

225 USD FOR PACKAGE C

THESE PRICES ARE FACTORY COSTS THAT WE USED TO WORK WITH AS X-WORKS BASED ON DIFFERENT HOTEL NEEDS AS AVERAGE.

I HAVE SEEN MOST OF THE 2-4 STAR HOTELS GO FOR PACKAGE B THAT HAS ALMOST EVERYTHING. AND THEY USE SEPARATE TYPE OF LOCKS SYSTEM THAT IS BATTERY BASED. ONLY 5-7 STAR MOSTLY GO FOR PACKAGE C THAT REQUIRES MORE ELEGANCE AND HIGHER COMFORT AS FULLY INTEGRATED ONLINE SYSTEM.



CASE STUDY BY HARWINDER MATHAROO **BEAUTIFUL MINDS**
BEAUTIFUL IDEAS

**WHAT ARE THE NEW
REMARKABLE FEATURES SEEN?**

GRMS GENERALLY COVERS THE FOLLOWING

FEATURES CONTROL:

- 1- LIGHTING
- 2- MOODS
- 3- ROOM TEMPERATURE
- 4- DND, MUR
- 5- ENERGY SAVING
- 6- INTEGRATED IPTV
- 7- MEDIA HUBS
- 8- DOOR ACCESS
- 9- DOOR BELL CHIME
- 10- MOTORIZED CURTAINS

MOST OF THE ONLINE SYSTEMS CAN REPORT

IF ROOM-DOOR FORGOTTEN OPEN, AND

HAS ALSO PRESETS FOR ROOM WELCOME,

AND CHECKOUT. SOME OF THE HOTEL I

WORKED WITH ALSO ADDED PANIC BUTTONS

AT BATHROOMS PER GOVERNMENT

REGULATIONS NEEDS.



HOWEVER, IT WAS NOTEWORTHY TO SEE AMAZING NEW FEATURES IMPLEMENTED SUCCESSFULLY THAT TAKES GRMS TO TOTALLY DIFFERENT LEVEL. SOME OF THESE FEATURES ARE

1- THE ABILITY BY THE HOUSEKEEPER TO REPORT ROOM READY STATUS, LAUNDRY PICKED, AND TO REPORT TO ENGINEERING THAT MAINTENANCE IS NEEDED AT THE PARTICULAR ROOM DIRECTLY FROM WALL PANEL HARDWARE IN SECONDS.



Housekeeper staff can report that:

- Room is ready directly online by simply long press on for 4 seconds MUR Button
- Room Require Maintenance by Long Press on DND button
- Laundry has been collected By long press on Laundry button.

2- MOON LIGHTING PREVENTION AND ALERT:

THIS UNIQUE FEATURE HAS ATTRACTED MY ATTENTION AND MADE IT REMARKABLE FOR MANY HOTELS INCLUDING MOTELS. THE NEW SMART HOTEL SYSTEM THAT WE SELECTED HAS THE UNIQUE ABILITY TO REPORT ANY UNAUTHORIZED USAGE OF THE HOTEL ROOM IN CASE IT WAS NOT OFFICIALLY REGISTERED WITH CHECK IN FLAG IN THE HOTEL ACCOUNTING SYSTEM.

THIS IS ACHIEVED AND REPORTED AUTOMATICALLY IF ANY PANEL IS TOUCHED, ANY MOTION IS DETECTED, IF WATER WAS RUNNING, IF DOOR IS OPENED AND MANY MORE.

IN SUCH CASE (MOONLIGHTING) THE MANAGER AND OWNER AS WELL AS SECURITY ARE ALERTED DIRECTLY AND THE CARD THAT HAS OPENED THE DOOR LAST WILL BE FLAGGED.

THIS DETECTION METHOD IS ALSO USED TO ENHANCE THE ACCURACY OF OCCUPANCY REPORTING WHEN ROOM IS OFFICIALLY CHECKED IN THE HOTEL ACCOUNTING SYSTEM

**3- ENERGY AND OCCUPANCY ANALYSIS:**

THIS FEATURE HELPS IN CALCULATING ROOM ENERGY USAGE BASED ON WATTAGE AND HOUR OF OPERATION

4- PREDICTIVE MAINTENANCE:

THIS FEATURE HELPS IN ALERTING FOR FILTERS CLEANING AND LIGHT BULB REPLACEMENT FORECAST BASED ON USAGE HOURS

5- LOCKING OF PANELS TO SAVE ENERGY AND TO ENFORCE PAYMENT OR CHECKOUT:

THIS FEATURE HELPS IN FORCING THE GUEST TO APPROACH RECEPTION FOR PAYMENT/EXTENSION ONCE CHECKOUT TIME HAS ELAPSED. ADDITIONALLY, CAN LOCK TEMPERATURE MAX OR MIN BASED ON HOURS LIKE AFTER 3:00 AM ALL ROOMS TEMPERATURE TO BE CHANGED TO 24 DEGREES IF OCCUPIED AND SET IN OPERATION BY GUEST (AS EXAMPLE)



AUTOMATIONS BUILDERS EXHIBITIONS INTERIORS
SMART HOME & QA FABRICATIONS STALL & GRAPHICS FURNITURES

CASE STUDY BY HARWINDER MATHAROO BEAUTIFUL MINDS BEAUTIFUL IDEAS

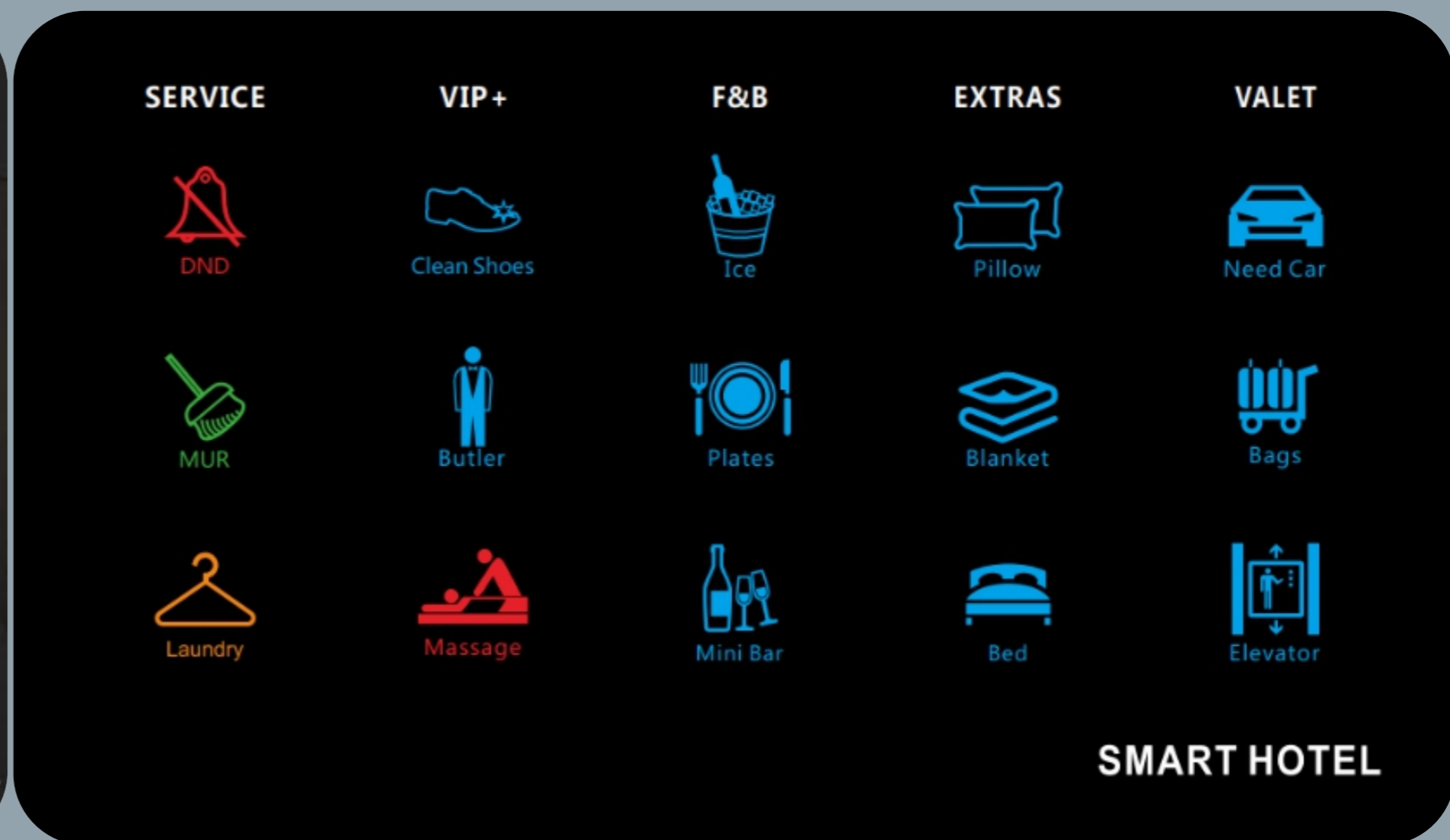
6- HOTEL VIP SERVICE PANEL AND APP CONTROL ABILITY:

THIS AMAZING THINKING HAS TAKEN ME TO TOTALLY DIFFERENT LEVEL IN HOTEL SERVICE ANALYSIS AND PUNCTUALITY. GIVING THE GUEST FULL AND DIRECT ABILITY TO REQUEST HIS NEED EXACTLY AND SWIFTLY WITHOUT WASTING MANY EMPLOYEES TIME IN CONVEYING THE NEEDS.

THIS FEATURED PANEL IS A MUST IN ALL NEW AND UNDER RENOVATION HOTELS IN MY OPINION.



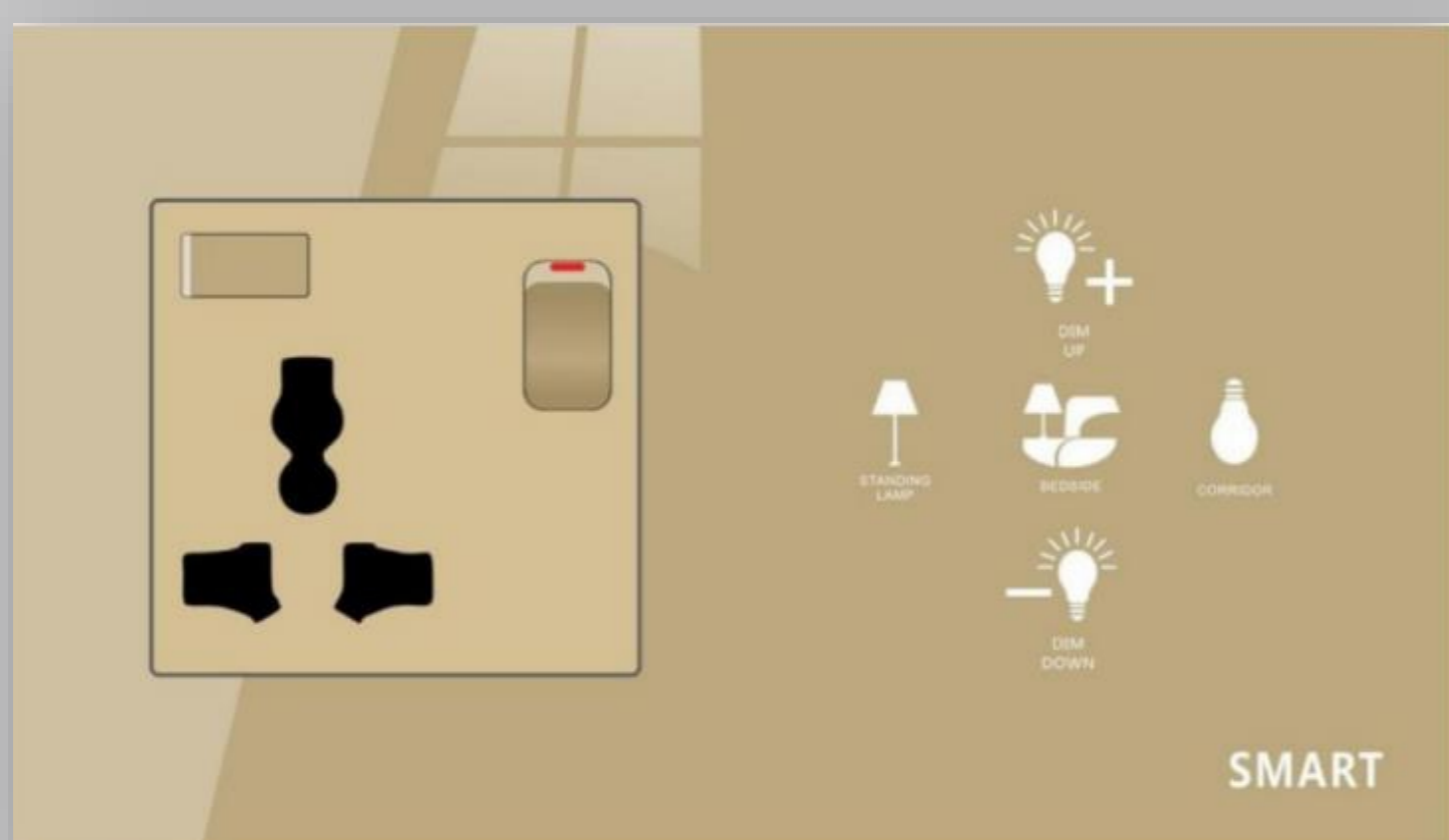
Smart Tablet GRMS App (Total Room Control)



VIP Service Panel for Hotel GRMS

7- HOTEL GLOBAL BMS

ANOTHER AMAZING FEATURE FOR HOTEL CHAINS IS THE GBMS SYSTEM THAT HELPS CENTRALLY TO MONITOR DIFFERENT BUILDINGS AT DIFFERENT CITIES AND COUNTRIES SIMULTANEOUSLY. IT ENABLES CHECKING OF ENERGY STATUS SERVICES, TEMPERATURE, LIGHTING, ALARMS, ALERTS AND OTHER IN SIMPLICITY AND EASE.



Integrated USB, Universal Socket, and Bedside

8- INTEGRATED BEDSIDE USB CHARGER WITH UNIVERSAL SOCKET:

IT IS AN ELEGANT ATTRACT AND JUST PERFECT FUNCTIONALITY FOR TODAY'S TRAVEL NEEDS OF 2022

- A- NO NEED TO CALL ENGINEERING FOR ADAPTER
- B- DIRECT FAST CHARGING OF SMART DEVICES
- C- FULLY PROTECTED WITH CHILD SAFETY
- D- ELEGANT AND DISCRETE

9- LOGICAL ROOM ENERGY SAVING WITH ALERTS:

THE NEW HOTEL GRMS FOR 2022 HAS THE ADDED LOGICAL FEATURES OF ENERGY SAVING WITH OR WITHOUT THE USE OF KEY CARD HOLDER. IT HAS BEEN NOTICED THAT GUESTS USUALLY LEAVE THE VALID SECOND HOTEL CARD IN THE KEY HOLDER SLOT LEAVING ALL ROOM SYSTEMS ON LIKE LIGHTS, AIR CON, TV...

WHILE THEY ARE NOT AT THE ROOM.

THE SMART GRMS TODAY CAN ALSO CHANGE AIRCON SETTING IF BALCONY DOOR HAS BEEN OPENED FOR MORE THAN FEW SECONDS. AND CAN ALERT HOUSEKEEPING TO CLOSE WINDOWS AND BALCONY DOORS THAT WERE LEFT OPEN WHILE ROOM IS NOT OCCUPIED TO HELP IN 2 THINGS:

- A- SAVE FURNITURE FROM BEING DAMAGED BY HIGH HUMIDITY OR DUST
 - B- DECREES INFILTRATION AND BUILDING ENERGY LOSS
- SYSTEM CAN ALSO CLOSE MOTORIZED CURTAINS AUTOMATICALLY BASED ON OCCUPANCY AND TIME OF THE DAY



Energy Aux2

10- ADVANCED ENERGY AND WATER SAVING:

WHILE DOING A HOTEL RESORT IN EGYPT, AND DURING MY VISIT, I HAVE LEARNED BY MERE COINCIDENCE FROM A MECHANICAL ENGINEER THAT THE HOTEL BMS WAS EQUIPPED WITH ADVANCED MULTI DOOR PEOPLE COUNTER FOR ITS LARGE BALL AND BANQUET HALLS. HE EXPLAINED TO ME THE FUNCTIONALITY OF SUCH ADVANCED SYSTEM WHERE FRESH AIR MUST BE INJECTED INTO THAT HALL PROPORTIONAL TO THE NUMBER OF PEOPLE THAT ENTER/EXIT THE HALL AND WITHOUT WASTAGE THAT CAN CAUSE SUDDEN DIVERSION OF HOTEL'S CHILLED OR BOILED WATER TO THE HALL UN-NECESSARILY. WATER USAGE METERING AND BUDGETARY ALLOCATION PER ROOM WAS ALSO IMPLEMENTED AS THAT AREA HAD SCARCE WATER SUPPLY. WITH AUTOMATIC WATER SHUTOFF SOLENOID IF ROOM NOT OCCUPIED TO AVOID WATER LEAKAGE LOSSES.

**I HAVE FOUND THESE FEATURES NOTE-WORTHY TO AS ADDED FEATURES TO THE NEW HOTEL AUTOMATION OF 2022.*

11- FIRE MARSHALL RELEASE:

THIS FEATURE IS IMPORTANT IN CASE OF FIRE, THE NEW SMART HOTEL SYSTEMS CAN GIVE OCCUPANCY REPORT, AND FIRE MARSHAL CAN RELEASE THE DOORS USING BREAK GLASS KEY THAT UNLOCKS ALL ROOM DOORS FOR EASY AND FAST ENTRY BY FIRE MEN WITH EASY ADDRESSING.



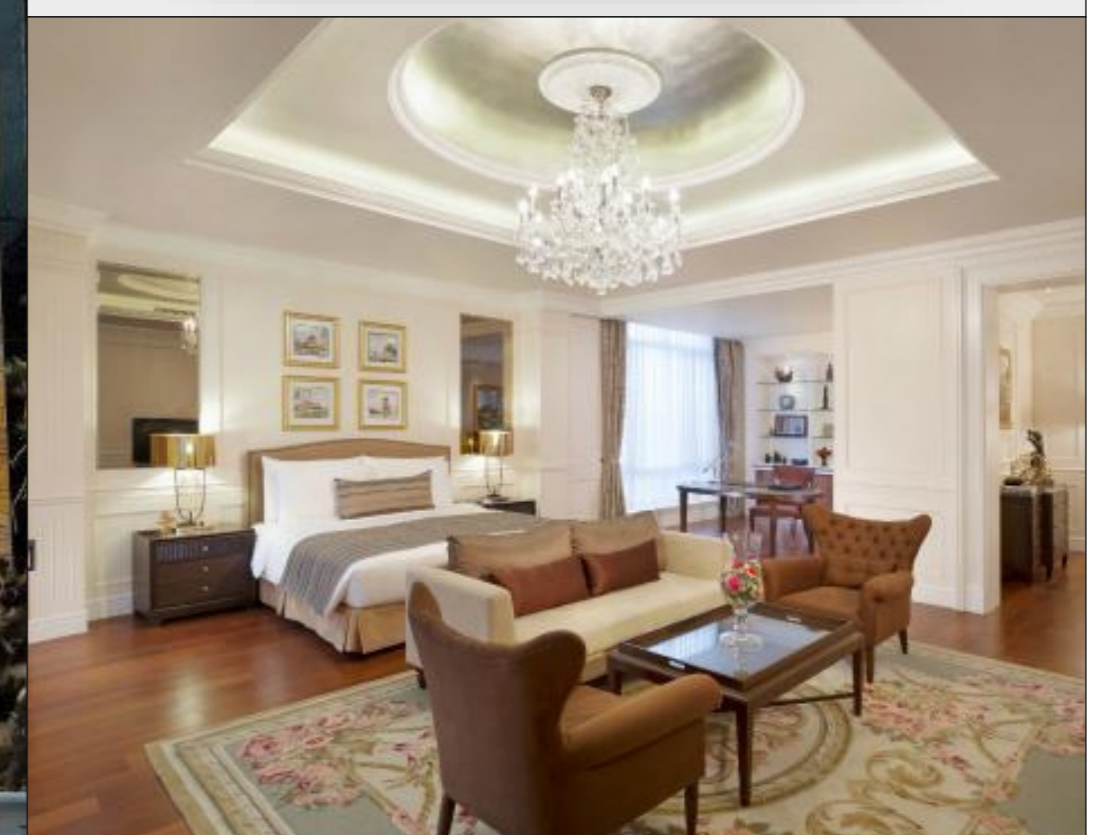


CAN HOTEL GET EXTRA STAR IF AUTOMATED?

YES, THAT HELP IN GETTING BETTER RATING. COMFORT AND CONVENIENCE WHERE GUESTS ARE ABLE TO CONTROL THE ROOM LIGHTS FROM COMFORT OF BED IS ONE OF THE MUST HAVE TO ADD 1 EXTRA STAR TO HOTELS AS EXAMPLE.

WHICH HOTEL CATEGORY CAN AUTOMATION APPLY TO?

- ENERGY SAVING AND SERVICE REQUESTS APPLIES TO ALL HOTELS,
- LIGHTING CONTROL MAY APPLY TO 3 STARS HOTELS, MOTELS AND ABOVE.
- HVAC, VIP SERVICES AND MOTORIZATION APPLIES TO 4 STAR AND ABOVE MOSTLY



C-Bus KNX

SMART-BUS **G4**

WHICH TECHNOLOGY HAS THE BEST GRMS SOLUTION TODAY?

THERE ARE MANY TECHNOLOGIES WORLDWIDE, BUT AMONG THE BEST THAT HAS MAJOR MARKET SHARES AND FAST PROGRESS UP TO DATE ARE:

SMART-BUS, KNX, C-BUS



AUTOMATIONS BUILDERS EXHIBITIONS INTERIORS
SMART HOME & QA FABRICATIONS STALL & GRAPHICS FURNITURES

Back Bone

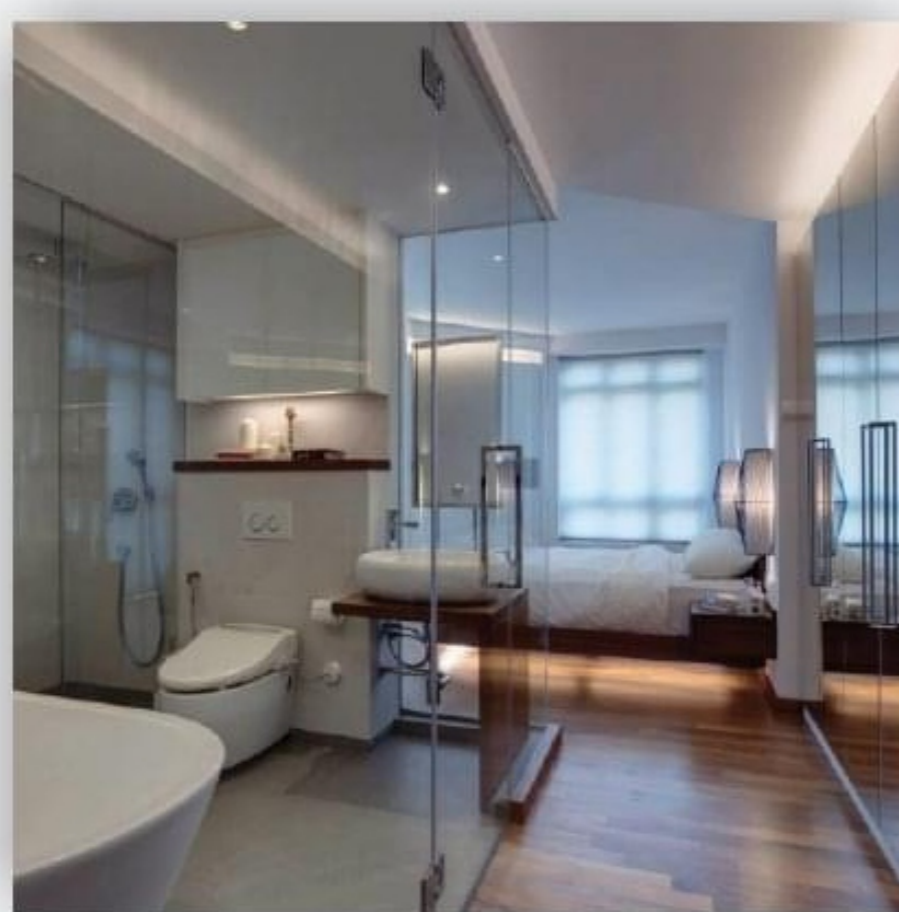
RSIP3 Good for 50 Rooms to communicate 2-way with main server system (PC SQL Server by Client)



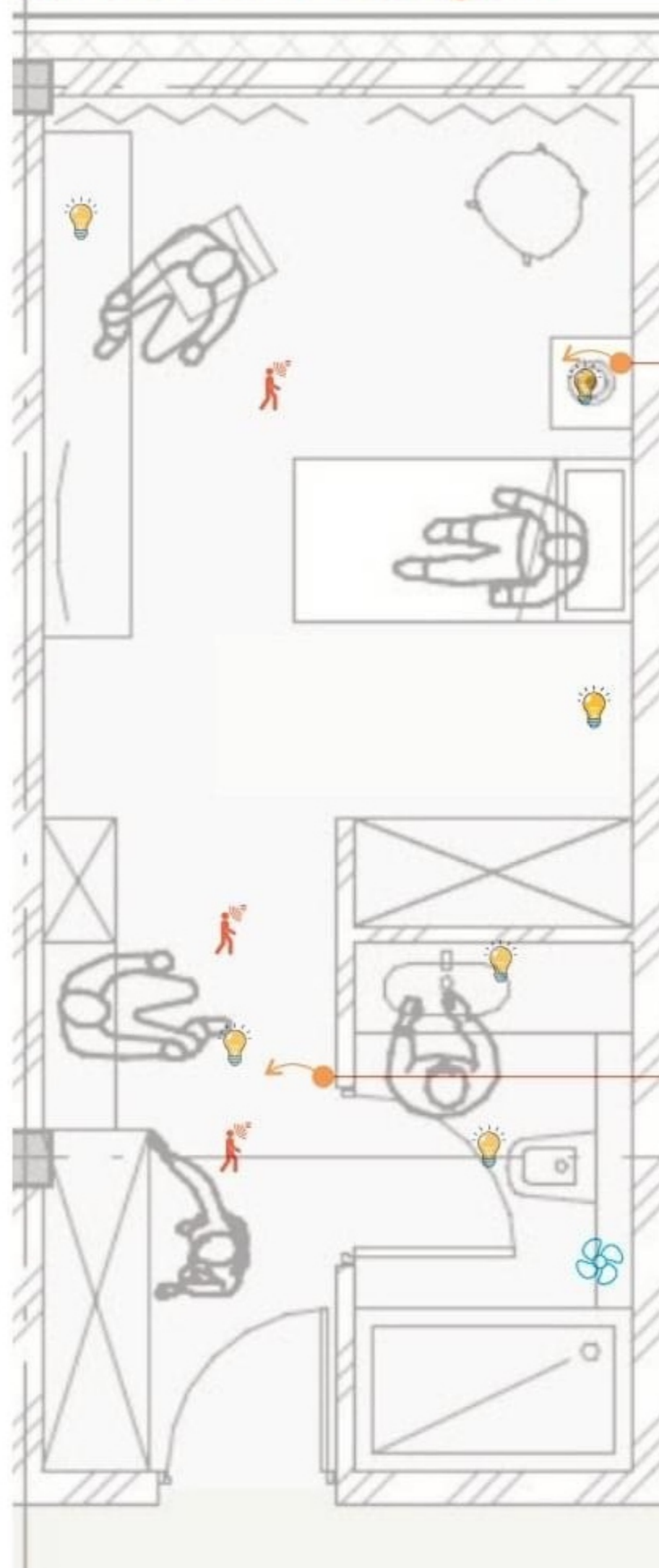
Cable Manager++ To Organise S-BUS wires coming from Rooms in Backbone structure of Hotel



1 Power Supply for Every 20 Rooms



G4 GRMS Package A



Online/ Offline System



- Easy Touch Panel
- Lights
- Motion
- Temperature
- Service: MUR, DND, Other
- Moods +
- LED Night Light Surround
- IR for TV Or Split AC Control

Can Add Curtain Control and Motor as Option*




- Easy Touch Panel
- Temperature
- Lights
- Motion
- Service: MUR, DND, Other
- Moods +
- LED Night Light Surround (Night Light can activate on Motion)


Service Module at H.Keeping
Check in/Out Mood Control

Back Bone


Cool Master Bridge to connect to client's cool master for VRF VRV Air con System (good for 32-64 FCU)



RSIP3 Good for 50 Rooms to communicate 2-way with main server system (PC SQL Server by Client)



Cable Manager++ To Organise S-BUS wires coming from Rooms in Backbone structure of Hotel




1 Power Supply for Backbone

*Chime option (Ding Dong)
Can be locally purchased

Energy Saving Master Panel
Cuts Room Power if no occupancy based on sensors after door is closed last.
Built in 32A Heavy relay
5A relay for other use
24VDC S-Bus Power
12VDC Power supply for lock, PIR, and Chime.
Built in Energy Logic

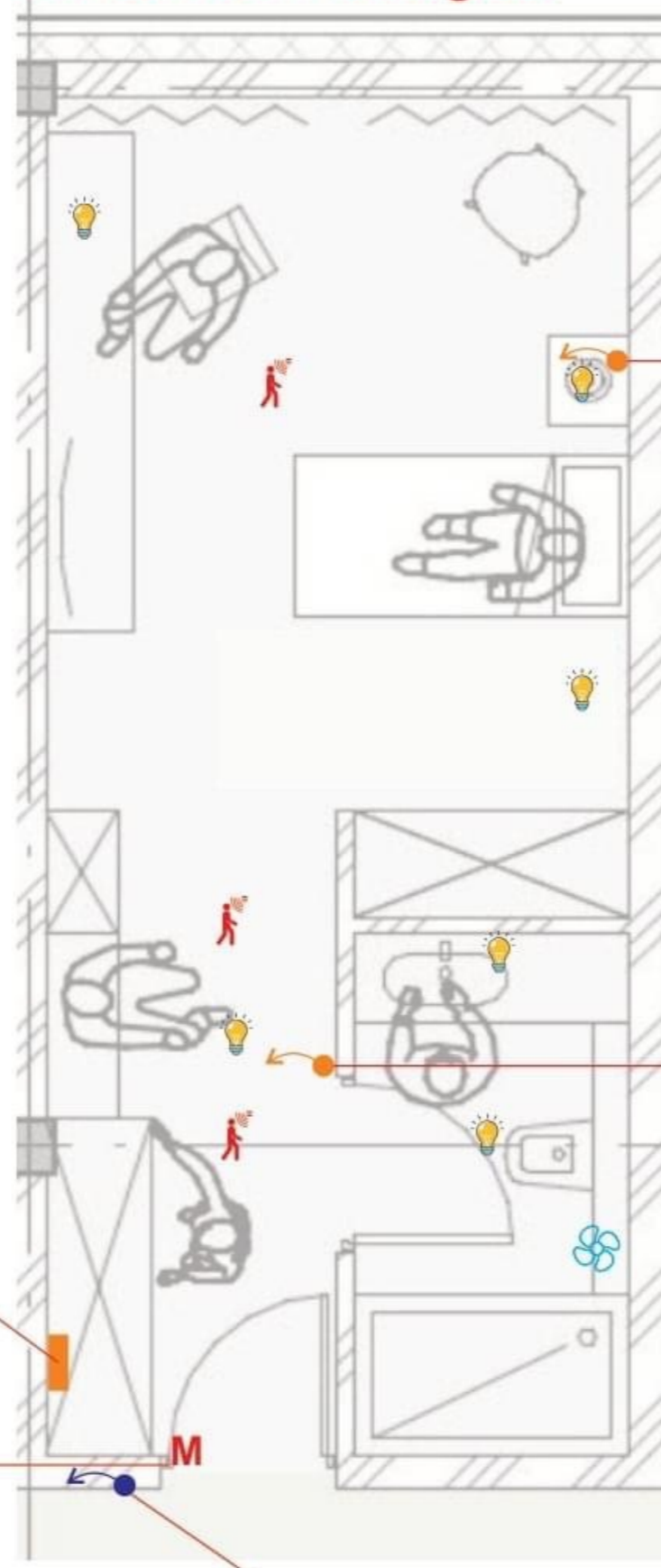


Magnetic Door window Contact
For occupancy check trigger and energy saving + Alert if door forgotten open



Service Module at H.Keeping
Check in/Out Mood Control
Energy and Security Module

G4 GRMS Package B




Online/ Offline System



- Easy Touch Panel
- Temperature
- Lights
- Motion
- Service: MUR, DND, Other
- Moods +
- LED Night Light Surround
- IR for TV Or Split AC Control

Can Add Curtain Control and Motor as Option*



- Easy Touch Panel
- Temperature
- Lights
- Motion
- Service: MUR, DND, Other
- Moods +
- LED Night Light Surround (Night Light can activate on Motion)



Door Bell with room Number
Services: MUR, DND, Other
Alert if Door Forgotten Open

Can Come with Access card Reader as Option*

CASE STUDY BY HARWINDER MATHAROO BEAUTIFUL MINDS BEAUTIFUL IDEAS

Back Bone

Cool Master Bridge to connect to client's cool master for VRF VRF Air con System (good for 32-64 FCU)

RSIP3 Good for 50 Rooms to communicate 2-way with main server system (PC SQL Server by Client)

Cable Manager++ To Organise S-BUS wires coming from Rooms in Backbone structure of Hotel

1 Power Supply for Backbone

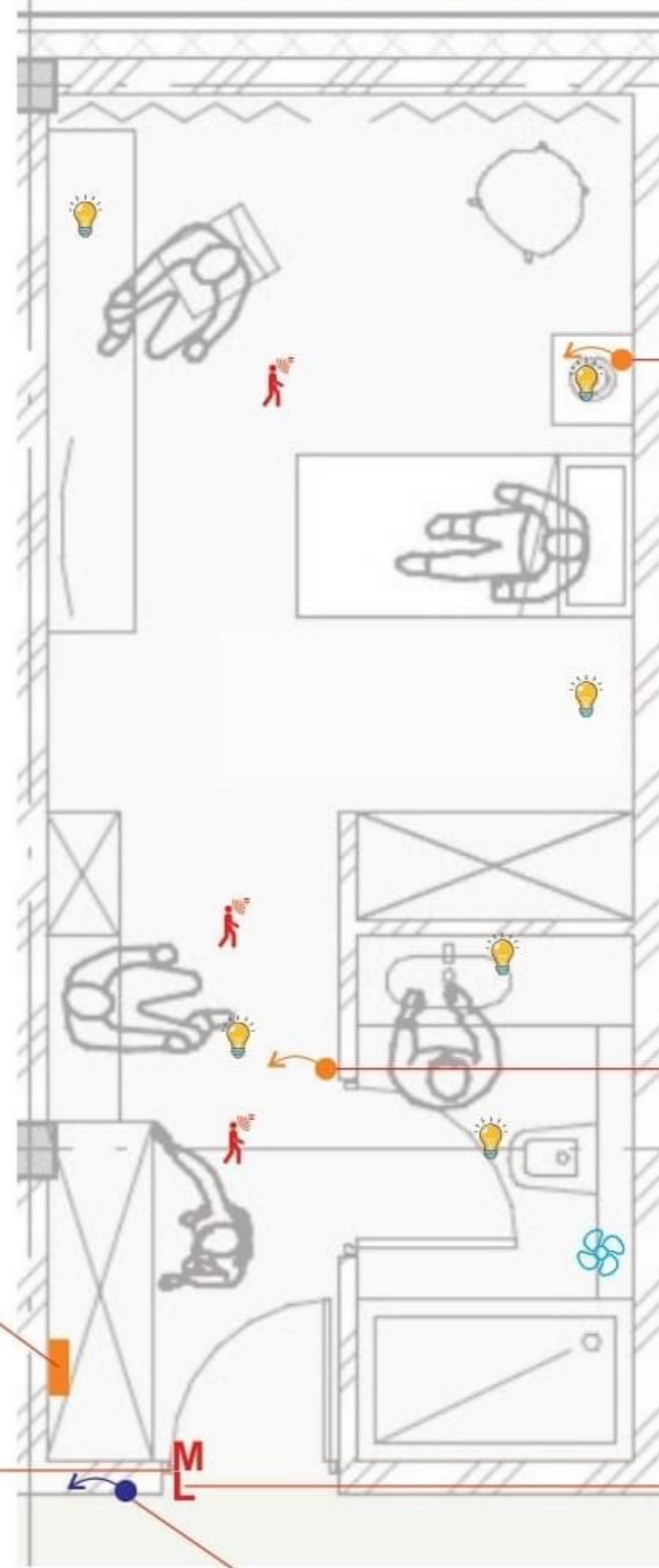
*Chime option (Ding Dong) Can be locally purchased

Energy Saving Master Panel Cuts Room Power if no occupancy based on sensors after door is closed last. Built in 32A Heavy relay 5A relay for other use 24VDC S-Bus Power 12VDC Power supply for lock, PIR, and Chime. Built in Energy Logic

Magnetic Door window Contact For occupancy check trigger and energy saving + Alert if door forgotten open

Service Module at H.Keeping Check in/Out Mood Control and Encoding Energy and Security Module & Moonlighting

G4 GRMS Package C



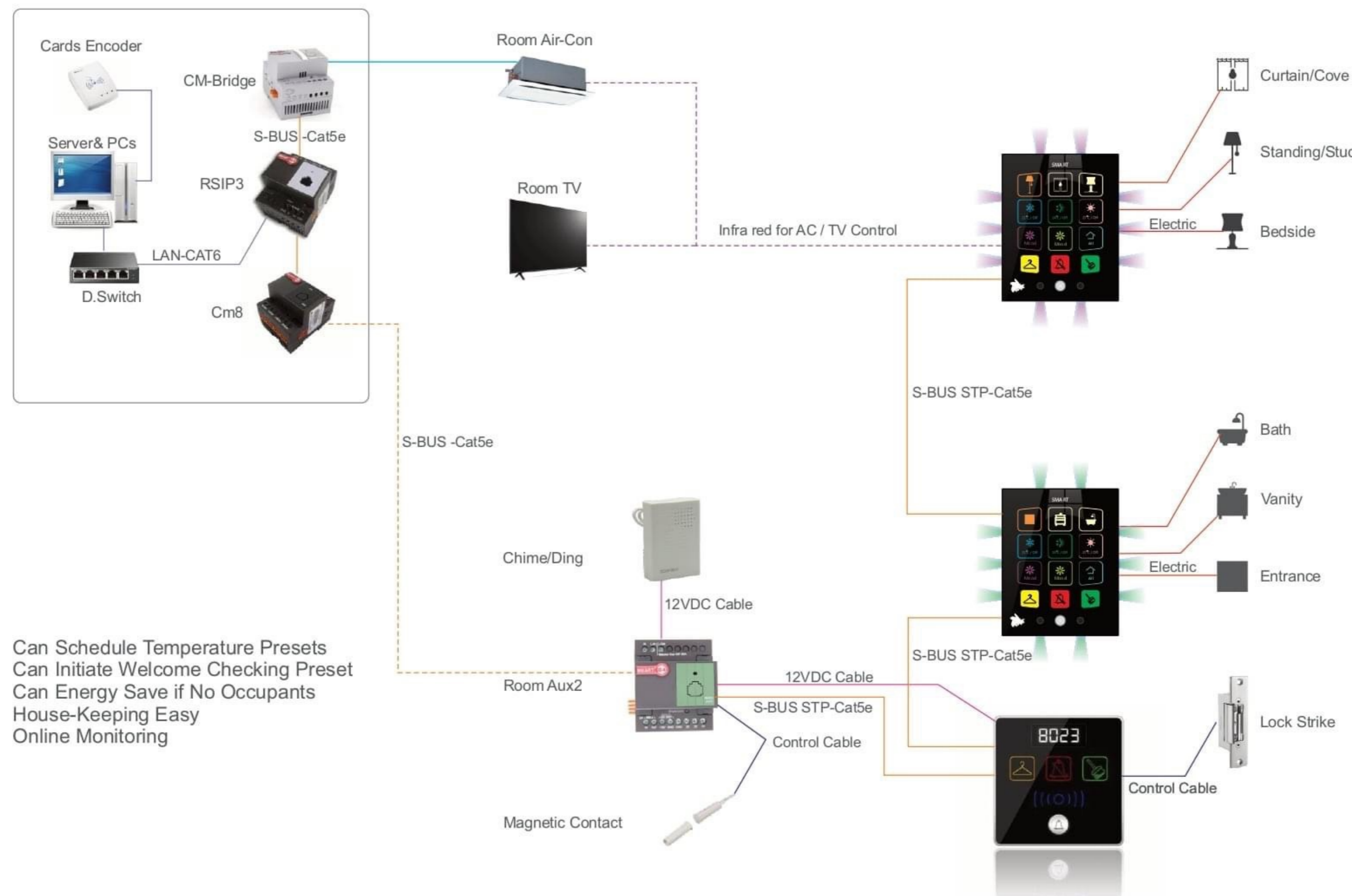
Online/ Offline System

Easy Touch Panel
 Temperature
 Lights
 Motion
 Service: MUR, DND, Other
 Moods +
 LED Night Light Surround
 IR for TV Or Split AC Control
 Can Add Curtain Control and Motor as Option*

Easy Touch Panel
 Temperature
 Lights
 Motion
 Service: MUR, DND, Other
 Moods +
 LED Night Light Surround
 (Night Light can activate on Motion)

Door Bell with room Number
 Services: MUR, DND, Other
 Alarm if Door Forgotten Open
 Access card Reader
 Lock Strike Option*

G4 EASY GRMS Wiring Diagram



Can Schedule Temperature Presets
 Can Initiate Welcome Checking Preset
 Can Energy Save if No Occupants
 House-Keeping Easy
 Online Monitoring